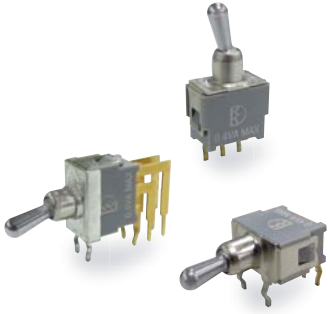


# 2TE Series

Sub-Miniature Toggle Switches(Washable)

2TE  
Toggle Switches



## SPECIFICATIONS

**CONTACT RATING:** Max 0.4 VA max @ 48 VAC or DC

**MECHANICAL LIFE:** minimum 40,000 operations.

**CONTACT RESISTANCE:** 50 mΩ max.

**INSULATION RESISTANCE:** 1,000 MΩ min.

**DIELECTRIC STRENGTH:** 500 Vrms min. @sea level.

**OPERATING TEMPERATURE:** -20°C to 85°C.

**DEGREE OF PROTECTION:** IP67

## MATERIALS

**ACTUATOR:** Brass,chrome plated,internal O-ring seal.  
Standard for all actuators.

**BUSHING & HOUSING:** SPCC

**CASE:** Glass filled nylon 6/6, flame retardant,heat stabilized  
(UL94v-0)

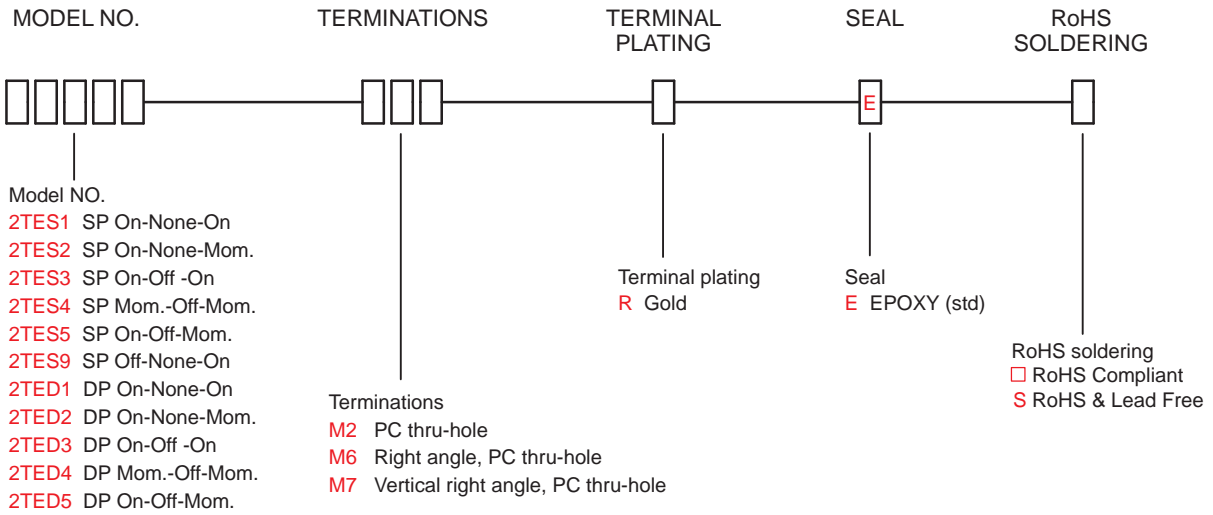
**SWITCH SUPPORT:** Brass,tin plated.

**CONTACT:** Phosphor bronze gold - plated over nickel barrier.

**TERMINALS:** Brass,gold plated.

**TERMINAL SEAL:** Epoxy

## HOW TO ORDER



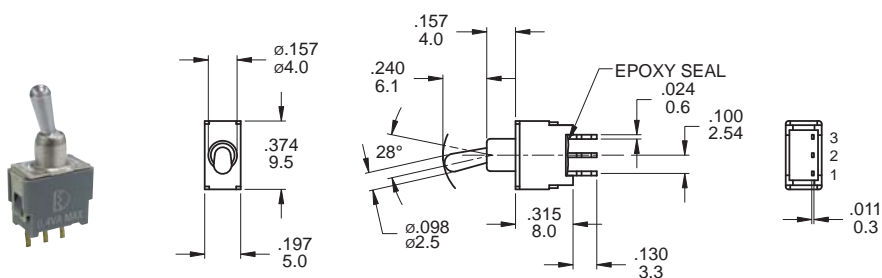
## SWITCH FUNCTION

NO. POLES	MODEL NO.	SWITCH FUNCTION			CONNECTED TERMINALS / SCHEMATIC		
		POS.1	POS.2	POS.3	POS.1	POS.2	POS.3
SP	2TES1	ON	NONE	ON	 2-3	N/A	 2-1
	2TES2	ON	NONE	MOM		OPEN	
	2TES3	ON	OFF	ON			
	2TES4	MOM	OFF	MOM	OPEN		
	2TES5	ON	OFF	MOM			
	2TES9	OFF	NONE	ON			
DP	2TED1	ON	NONE	ON	 2-3,5-6	N/A	 2-1,5-4
	2TED2	ON	NONE	MOM		OPEN	
	2TED3	ON	OFF	ON			
	2TED4	MOM	OFF	MOM	OPEN		
	2TED5	ON	OFF	MOM			

MOM=MOMENTARY

## POLE OPTIONS

M2

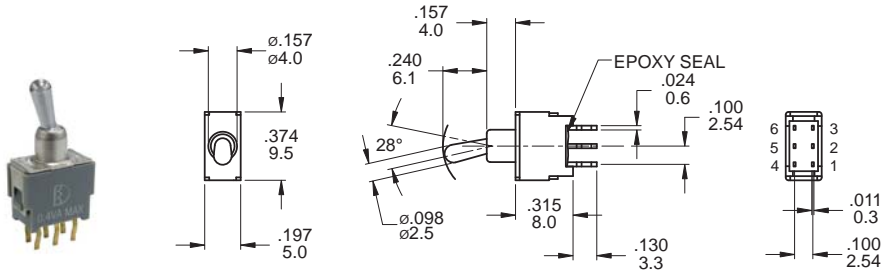


P.C. MOUNTING

SPDT

Part No. Shown : 2TES1M2RES

M2



P.C. MOUNTING

DPDT

Part No. Shown : 2TED1M2RES

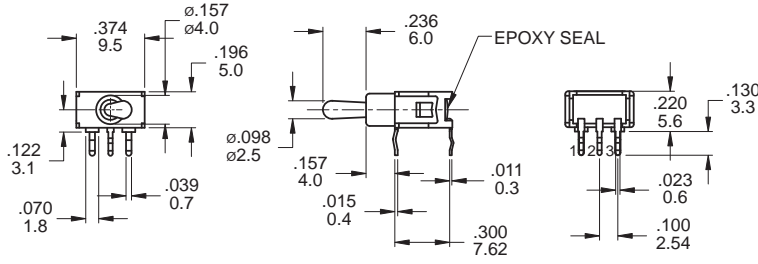


# 2TE Series

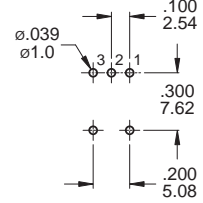
Sub-Miniature Toggle Switches(Washable)

2TE Toggle Switches

**M6**



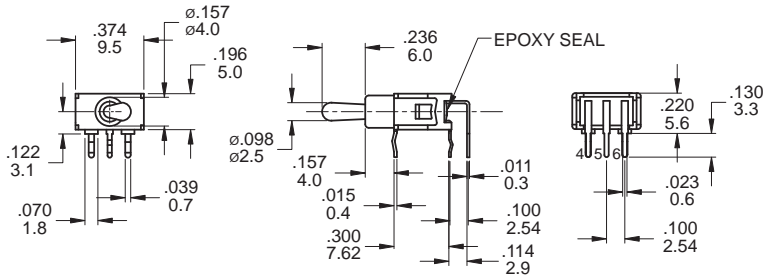
P.C. MOUNTING



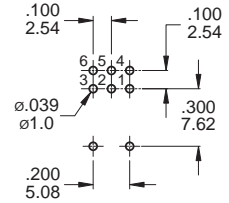
**SPDT**

Part No. Shown : 2TES1M6RES

**M6**



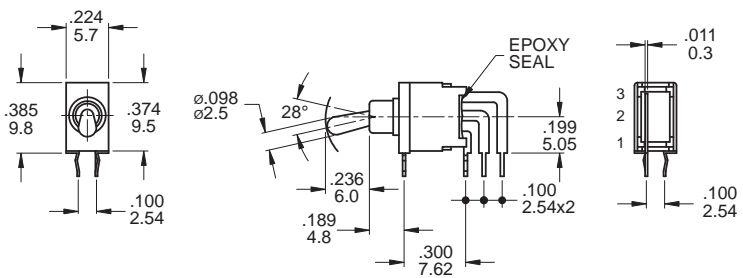
P.C. MOUNTING



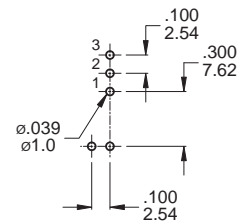
**DPDT**

Part No. Shown : 2TED1M6RES

**M7**



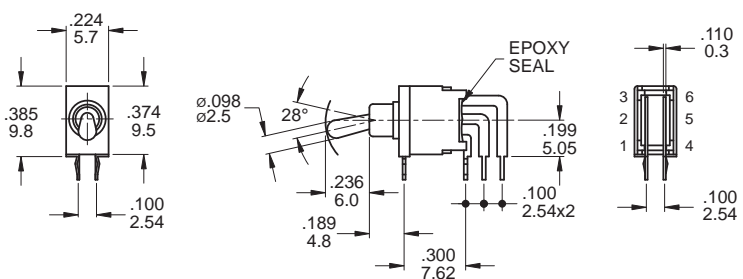
P.C. MOUNTING



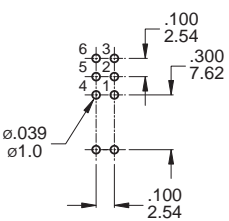
**SPDT**

Part No. Shown : 2TES1M7RES

**M7**



P.C. MOUNTING



**DPDT**

Part No. Shown : 2TED1M7RES

## SOLDERING PROCESSES

**WAVE SOLDERING:** Recommended Soldering Temperature:  $260 \pm 5^\circ\text{C}$

Duration of Solder Immersion: Max 5 sec.(PCB is 1.6mm in thickness)