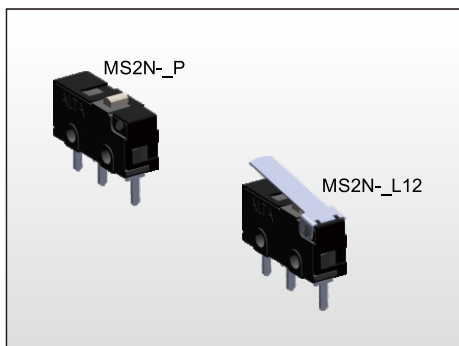


MICRO SWITCH MS2N SERIES



FEATURES

- ※Subminiature switch conforming to UL.
- ※PCB terminal.
- ※Highly reliable with long operating life.

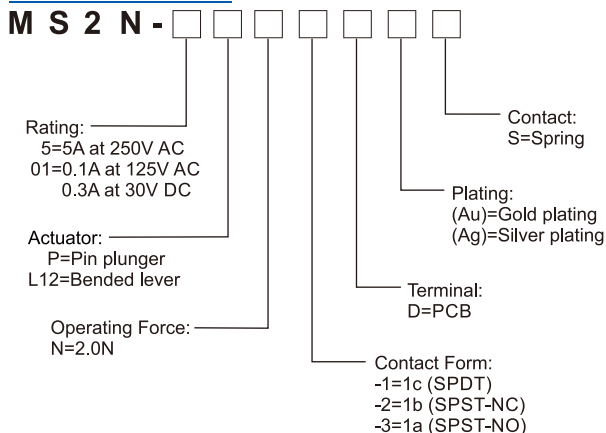
APPLICATION

- ※Kitchen appliances
- ※Vacuum cleaner, Printers
- ※Smart locks
- ※White goods

SPECIFICATION

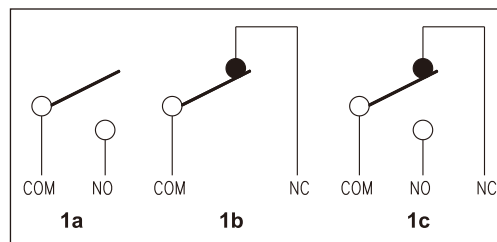
Contact Rating	0.1A at 125V AC/0.3A at 30V DC 5A at 250V AC	MS2N-01 MS2N-5
Mechanical Durability	1,000,000 cycles	
Electrical Durability	10,000 cycles min. Movable type: 50,000 cycles Spring type: 10,000 cycles	MS2N-01 MS2N-5
Contact Resistance	100mΩ max. 50mΩ max.	MS2N-01 MS2N-5
Insulation Resistance	100MΩ min.	
Dielectric Strength	Between terminals of same polarity "AC 1000V 1min" Between current-carrying metal parts and ground "AC 2500V 1min" Between each terminal and non-current-carrying metal part "AC 2500V 1min"	
Vibration Resistance	10~55HZ Double amplitude: 1.5mm (For Pin Plunger)	
Shock Resistance	300m/s ² (For Pin Plunger)	
Operating Speed	0.1~1mm/s (Without Load)	
Operating Frequency	300/min (Without Load)	
Operating Temp.	-40°C ~ +105°C	

HOW TO ORDER



Note:
These values are for the pin plunger models.

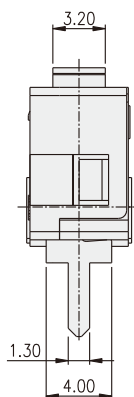
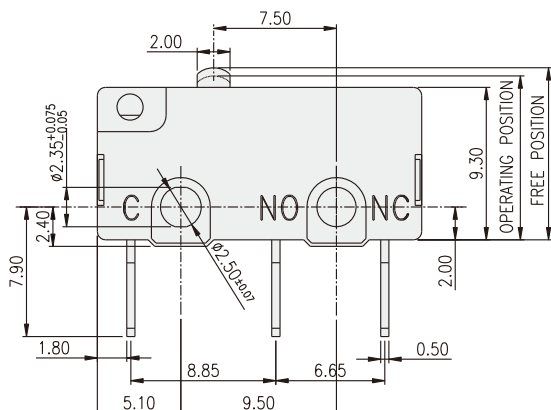
CIRCUIT



TYPE

Actuator	Terminal Type	Spring Type	
		Silver Alloy	Gold Alloy
Pin Plunger	PCB Terminal	MS2N-5PN-1D(Ag)S	MS2N-01PN-1D(Au)S
		MS2N-5PN-2D(Ag)S	MS2N-01PN-2D(Au)S
		MS2N-5PN-3D(Ag)S	MS2N-01PN-3D(Au)S
Simulated Roller Lever		MS2N-5L12N-1D(Ag)S	MS2N-01L12N-1D(Au)S
		MS2N-5L12N-2D(Ag)S	MS2N-01L12N-2D(Au)S
		MS2N-5L12N-3D(Ag)S	MS2N-01L12N-3D(Au)S

MS2N- [] [] P [] - [] D



OPERATING CHARACTERISTICS

ITEM	SPEC.
OPERATING FORCE	2.0N MAX
RELEASE FORCE	0.25N MIN.
PRE TRAVEL	0.60mm MAX.
OVER TRAVEL	0.50mm MIN.
MOVEMENT DIFFERENTIAL	0.20mm MAX.
OPERATING POSITION	10.10±0.5 mm

