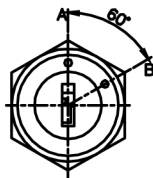
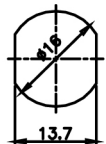
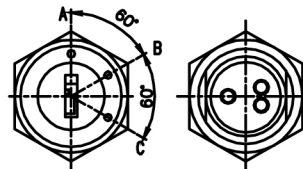


Recommended hole size

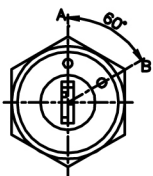
Unit: mm



332



333



331

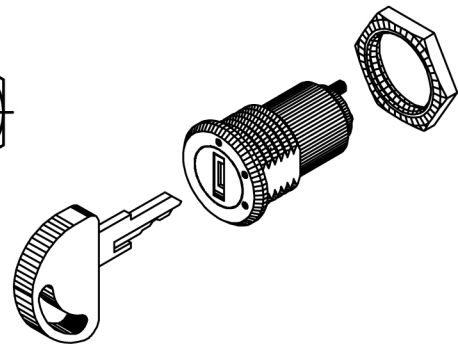
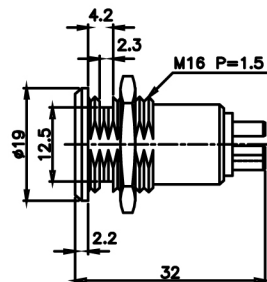


Fig.1

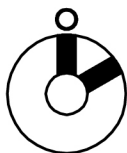


Fig.2



Fig.3

Fig No	Lock Number	Pole	Positions	Terminals	Key Pulls	Turn	⬆	↗	↘	Type
1	S331	1	2	3	2	60°	On	On		SPDT
2	S332	1	2	2	2	60°	Off	On		SPST
3	S333	1	3	3	3	120°	Off	On	On	SPDT