



FEATURES

- ※Electrical life: 100,000 cycles
- ※3.2x4.0mm miniature tact switch

APPLICATION

- ※Control panel
- ※Remote controls
- ※Keyless entry devices

SPECIFICATION

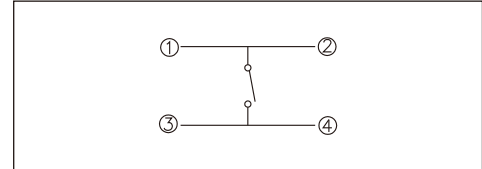
| | |
|-----------------------|-----------------------------|
| Contact Rating | 10μA, 1V DC to 50mA, 16V DC |
| Contact Resistance | 500mΩ max. |
| Insulation Resistance | 100MΩ min. 100V DC |
| Dielectric Strength | 250V AC/1 minute |
| Operating Force | 160±50gf/260±80gf/400±100gf |
| Travel | 0.12mm |
| Operating Life | 100,000 cycles |
| Operating Temp. | -30°C ~ +85°C |
| Storage Temp. | -30°C ~ +85°C |

HOW TO ORDER

TAH - □ QR

- Operating Force:
1=160gf (Brown)
2=260gf (White)
3=400gf (Black)
- Package:
Tape & Reel
- Halogen Free

CIRCUIT

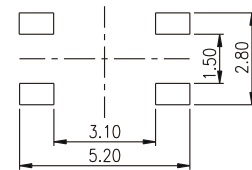
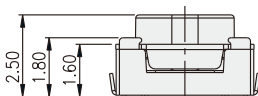
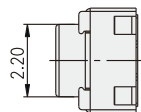
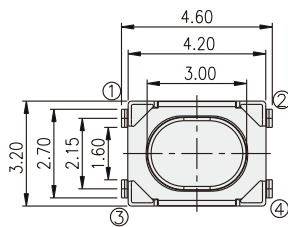


PACKAGE

<Tape & Reel>
3000 pcs

TACT SWITCH

TAH



P.C.B. LAYOUT