

T1D

FEATURES

- ※ Compact-size 2.2*1.3mm
- ※ Low profile with 0.55mm
- ※ 100,000 operation cycles

APPLICATION

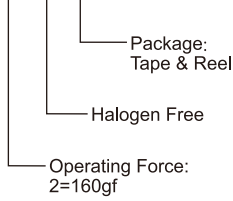
- ※ Smart phone
- ※ Digital camera, Medical
- ※ Portable electronic device
- ※ 3C products

SPECIFICATION

Contact Rating	50mA, 12V DC
Contact Resistance	100mΩ max.
Insulation Resistance	100MΩ min. 100V DC
Dielectric Strength	250V AC/1 minute
Operating Force	160±50gf
Travel	0.11mm
Operating Life	100,000 cycles
Operating Temp.	-30°C ~ +85°C
Storage Temp.	-40°C ~ +85°C

HOW TO ORDER

T 1 D □ Q R

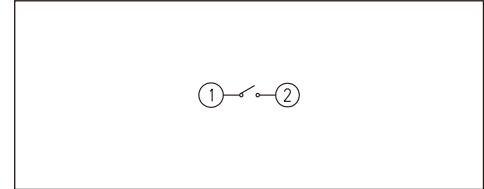


Package:
Tape & Reel

Halogen Free

Operating Force:
2=160gf

CIRCUIT

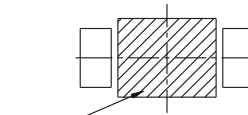
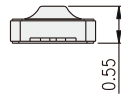
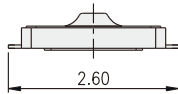
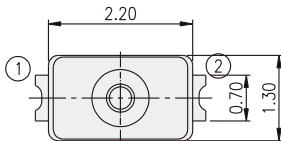


PACKAGE

To be confirmed

TACT SWITCH

T1D



Any land pattern or vias shall not be provided at 1.5X1.2 area.

P.C.B. LAYOUT