

TACT SWITCH  
**T1B** SERIES

2.6\*1.6 J Terminal SMT Type  
(H=0.55mm)



T1B

**FEATURES**

- ※ Compact-size 2.6\*1.6mm
- ※ Low profile with 0.55mm
- ※ 200,000 operation cycles

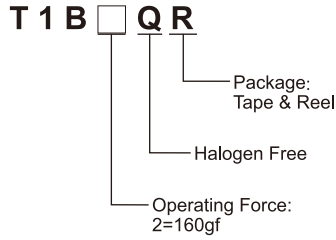
**APPLICATION**

- ※ Smart phone
- ※ Digital camera, Medical
- ※ Portable electronic device
- ※ 3C products

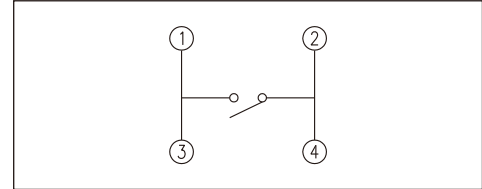
**SPECIFICATION**

|                       |                             |
|-----------------------|-----------------------------|
| Contact Rating        | 10uA, 2V DC to 20mA, 15V DC |
| Contact Resistance    | 500mΩ max.                  |
| Insulation Resistance | 50MΩ min. 100V DC           |
| Dielectric Strength   | 250V AC/1 minute            |
| Operating Force       | 160±50gf                    |
| Travel                | 0.11mm                      |
| Operating Life        | 300,000 cycles              |
| Operating Temp.       | -40°C ~ +85°C               |
| Storage Temp.         | -40°C ~ +85°C               |

**HOW TO ORDER**



**CIRCUIT**

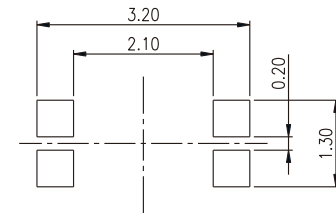
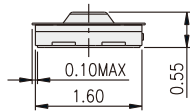
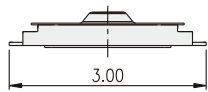
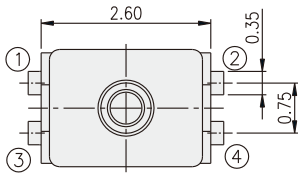


**PACKAGE**

<Tape & Reel>  
5000 pcs

TACT SWITCH

**T1B**



P.C.B. LAYOUT