



SPECIFICATIONS

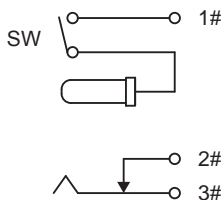
- CONTACT RATING:** 5A/15VDC.
- INITIAL CONTACT RESISTANCE:** 20mΩ(initial).
- INSULATION RESISTANCE:** 1000MΩ
(500VDC between open contact).
- DIELECTRIC STRENGTH:** 1500V RMS@sea level.
- ELECTRICAL LIFE:** 6000 cycles min.
- OPERATION FORCE FOR THE ROCKER:** 4~9N.

MATERIALS

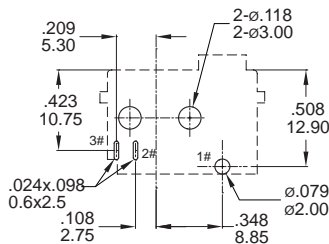
- HOUSING:** Nylon6/6 UL94V0 black.
- ROCKER:** Nylon6/6 UL94V2 black.
- PIN:** Brass,Nickel plated.
- PIN TERMINAL:** Brass,Coin silver,Silver plated.
- BREAK TERMINAL:** Brass,Silver plated.
- TIP TERMINAL:** Stainless steel,Silver plated.
- CONTACT:** Brass,Coin silver,Silver plated.
- SIDE:** Brass,Nickel plated.
- SPRING:** Spring steel.



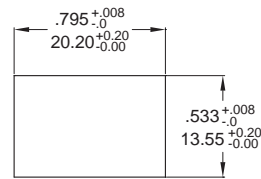
ELECTRICAL SCHEMATIC



SPST



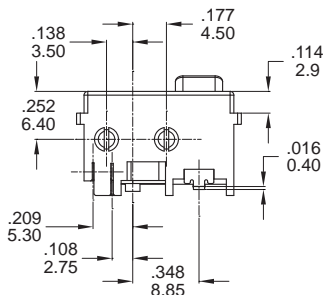
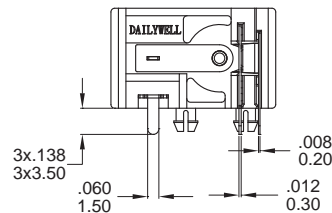
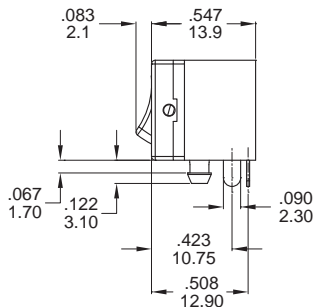
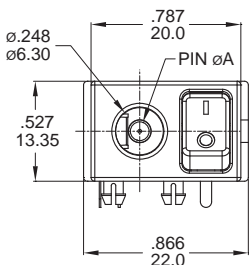
PCB LAYOUT
BOTTOM VIEW



PANEL CUT-OUT

DIMENSION

mm	
Dimensions	PIN Ø A
MODEL	
LRJ-001	Ø2.50
LRJ-002	Ø2.00
LRJ-003	Ø2.10



LRJ
DC Power Jack Switches