

# 1-Channel Digital Temperature Indicators



## T3 / T4 Series CATALOG

For your safety, read and follow the considerations written in the instruction manual, other manuals and Autonics website.

The specifications, dimensions, etc are subject to change without notice for product improvement Some models may be discontinued without notice.

### Features

- Various control output options : relay, SSR drive, current
- 2 independent set points and control outputs for heating and cooling control (T4LP)
- Various sizes (W48×H48, W48×H96, W72×H72, W96×H96 mm)

### Ordering Information

This is only for reference, the actual product does not support all combinations. For selecting the specified model, follow the Autonics website .

**T** ① ② **I** - **N** ③ **N** ④ **C** - **N**

#### ① Digit

3: 3 digit  
4: 4 digit

#### ② Size

N: DIN W 48 × H 24 mm  
Y: DIN W 72 × H 36 mm  
W: DIN W 96 × H 48 mm  
S: DIN W 48 × H 48 mm (8 pin plug type)  
M: DIN W 72 × H 72 mm  
H: DIN W 48 × H 96 mm  
L: DIN W 96 × H 96 mm

#### ③ Power supply

X: 12-24 VDC≐  
4: 100-240 VAC~ 50/60 Hz

#### ④ Input type and using range

PN	Input	Using range	T3NI	T4YI T4WI	T3SI	T3HI	T4MI T4LI
K2	Thermo-couple	K(CA)	0 to 200 °C	○	-	-	-
K4			0 to 400 °C	○	-	-	-
K8			0 to 800 °C	○	-	○	-
KA			0 to 999 °C	○	-	-	○
KC			0 to 1200 °C	-	○	-	-
J2	J(IC)	J(IC)	0 to 200 °C	○	-	-	-
J4			0 to 400 °C	○	-	○	○
J5			0 to 500 °C	○	○	-	-
RF	R(PR)	600 to 1600 °C	-	-	-	○	
P0	RTD	DPT100Ω	-99.9 to 99.9 °C	○	-	-	-
P0			-99.9 to 199.9 °C	-	○	-	○
P0			-99 to 199 °C	-	-	-	○
P1			0 to 99.9 °C	○	-	○	-
P2			0 to 200 °C	○	-	-	-
P4			0 to 400 °C	○	○	-	○

• Contact us for temperature unit °F model.

### Product Components

- Product (+ bracket)
- Instruction manual
- [T4YI] Product, bracket × 2

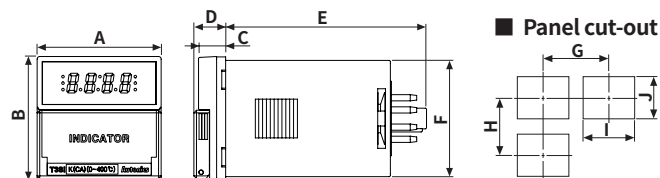
### Specifications

Series	T3, T4 Series
Power supply	100 - 240 VAC~ 50/60 Hz ±10% (T3NI: 12 - 24 VDC≐ ±10%)
Power consumption	≤ 5 VA (T3NI: ≤ 1 W)
Input specification	Refer to 'Ordering Information: Input type and using range'.
Display accuracy <sup>01)</sup>	• At room temperature (23 °C ± 5 °C): (PV ± 0.5% or ± 1 °C higher one) ± 1 digit • Out of room temperature range: (PV ± 0.5% or ± 2 °C higher one) ± 1 digit
Display type	7 Segment (red), LED type
Dielectric strength	Between input terminal and power terminal: 2,000 VAC~ 50/60 Hz for 1 min
Vibration	0.75 mm amplitude at frequency of 10 to 55 Hz (for 1 min) in each X, Y, Z direction for 2 hours
Insulation resistance	≥ 100 MΩ (500 VDC≐ megger)
Noise immunity	± 2 kV square shaped noise (pulse width 1 μs) by noise simulator R-phase, S-phase
Ambient temperature	-10 to 50 °C, storage: -20 to 60 °C (no freezing or condensation)
Ambient humidity	35 to 85%RH, storage: 35 to 85%RH (no freezing or condensation)
Accessory	Bracket
Approval	ERC
Unit weight (packaged)	• T3NI: ≈ 25 g (≈ 48 g)      • T4YI: ≈ 123 g (≈ 181 g) • T4WI: ≈ 140 g (≈ 231 g)    • T3SI: ≈ 80 g (≈ 120 g) • T3HI: ≈ 137 g (≈ 203 g)    • T4MI: ≈ 137 g (≈ 202 g) • T4LI: ≈ 185 g (≈ 274 g)

01) In case of T3NI, T3SI Series and the decimal point display models  
At room temperature (23 °C ± 5 °C): (PV ± 0.5% or ± 2 °C higher one) ± 1 digit  
Out of room temperature range: (PV ± 0.5% or ± 3 °C higher one) ± 1 digit

### Dimensions

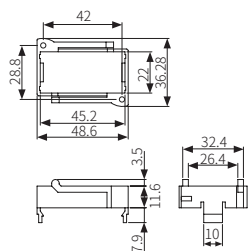
- Unit: mm, For the detailed drawings, follow the Autonics website.
- Below is based on T3SI Series.



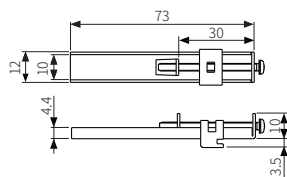
	Body						Panel cut-out			
	A	B	C	D	E	F	G	H	I	J
<b>T3NI</b>	48	24	4	-	48	21	≥ 55	≥ 37	45 <sup>+0.5</sup> <sub>0</sub>	22.2 <sup>+0.3</sup> <sub>0</sub>
<b>T4YI</b>	72	36	7	-	93	30	≥ 91	≥ 40	68 <sup>+0.7</sup> <sub>0</sub>	31.5 <sup>+0.6</sup> <sub>0</sub>
<b>T4WI</b>	96	48	12	-	100	45	≥ 116	≥ 52	92 <sup>+0.8</sup> <sub>0</sub>	45 <sup>+0.6</sup> <sub>0</sub>
<b>T3SI</b>	48	48	10.5	12.3	77.8	□45	≥ 65	≥ 65	45 <sup>+0.5</sup> <sub>0</sub>	45 <sup>+0.5</sup> <sub>0</sub>
<b>T3HI</b>	48	96	13	-	70	91.5	≥ 65	≥ 115	45 <sup>+0.6</sup> <sub>0</sub>	92 <sup>+0.8</sup> <sub>0</sub>
<b>T4MI</b>	72	72	11.8	14.3	75	□67.5	≥ 90	≥ 90	68 <sup>+0.7</sup> <sub>0</sub>	68 <sup>+0.7</sup> <sub>0</sub>
<b>T4LI</b>	96	96	12.5	-	70	□91.5	≥ 115	≥ 115	92 <sup>+0.8</sup> <sub>0</sub>	92 <sup>+0.8</sup> <sub>0</sub>

### Bracket

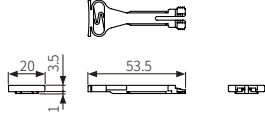
**T3NI**



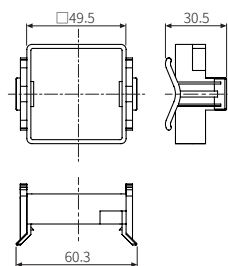
**T4YI**



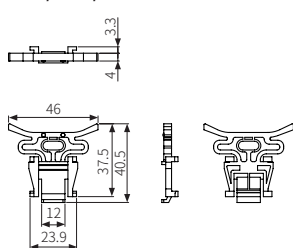
**T4WI**



**T3SI**



**T3HI/T4MI/T4LI**



### Sold Separately

- 8 pin socket: PG-8, PS-8 (N)
- Terminal protection cover: RMA / RHA / RLA Cover

4006-022-002

shunto@126.com