



SAW Filter 3500 MHz

MODEL NO.: TA2307A

REV. NO.:2

A. MAXIMUM RATING:

1. Input Power Level:

@ input port(3400~3600 MHz): 15 dB_m, Continuous wave for 100000 h @95 °C

@ input port(3400~3600 MHz): 22 dB_m, Continuous wave for 1000 h @95 °C

@ input port(3400~3600 MHz): 23 dB_m, Continuous wave for 2 h @95 °C

2. DC voltage: 0 V

3. Operating Temperature: -40°C to +105°C

4. Storage Temperature: -40°C to +105°C

5. Moisture Sensitivity Level: Level 1(MSL1)

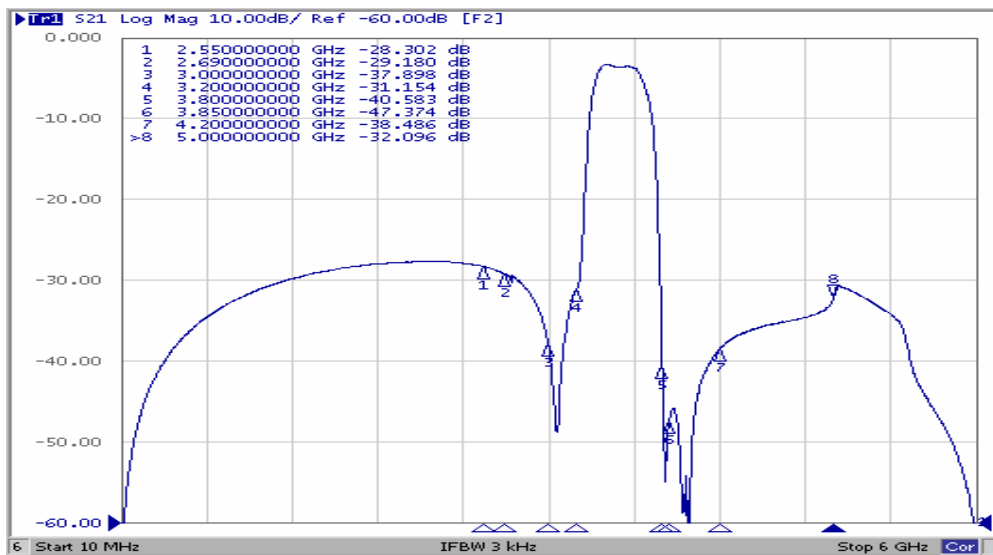
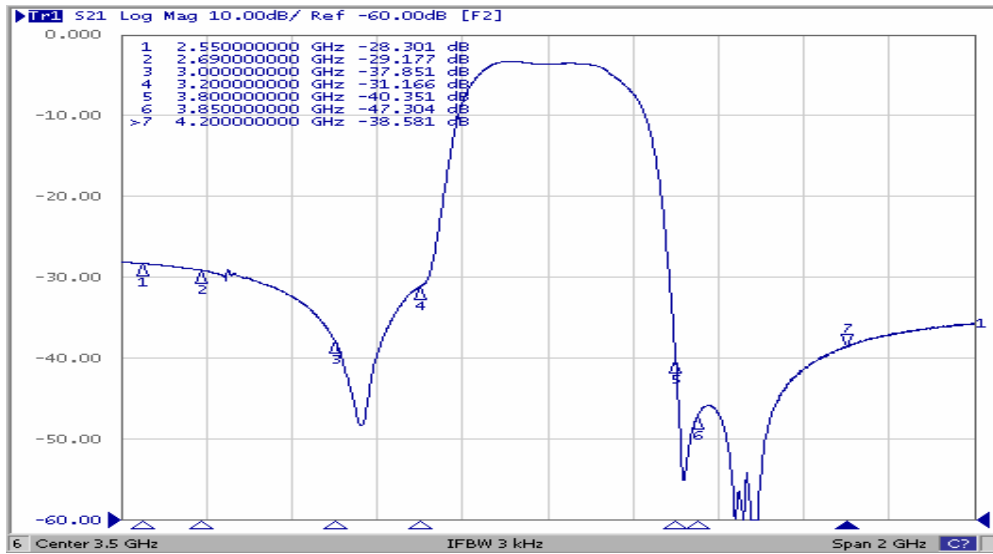
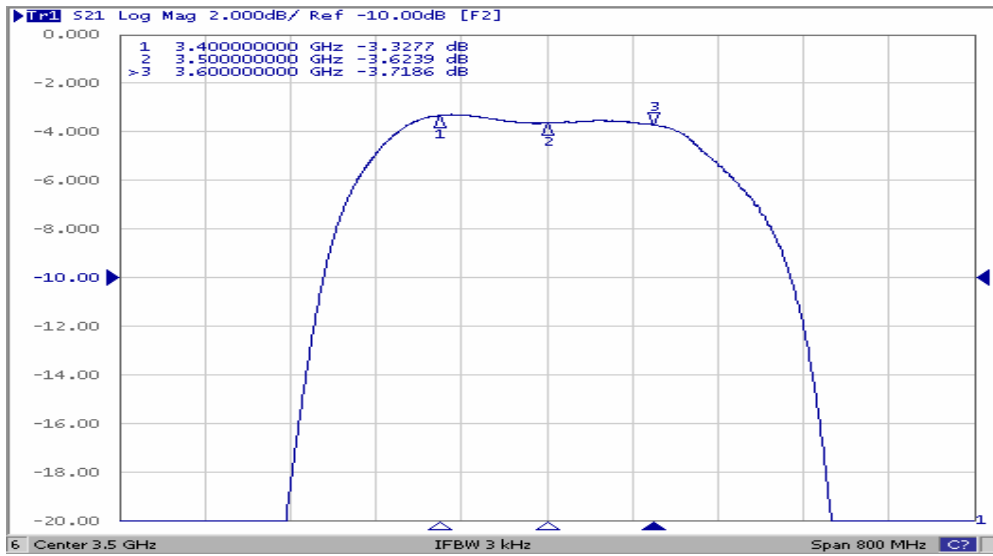
RoHS Compliant
Lead free
Lead-free soldering

Electrostatic Sensitive Device (ESD)

B. ELECTRICAL CHARACTERISTICS:

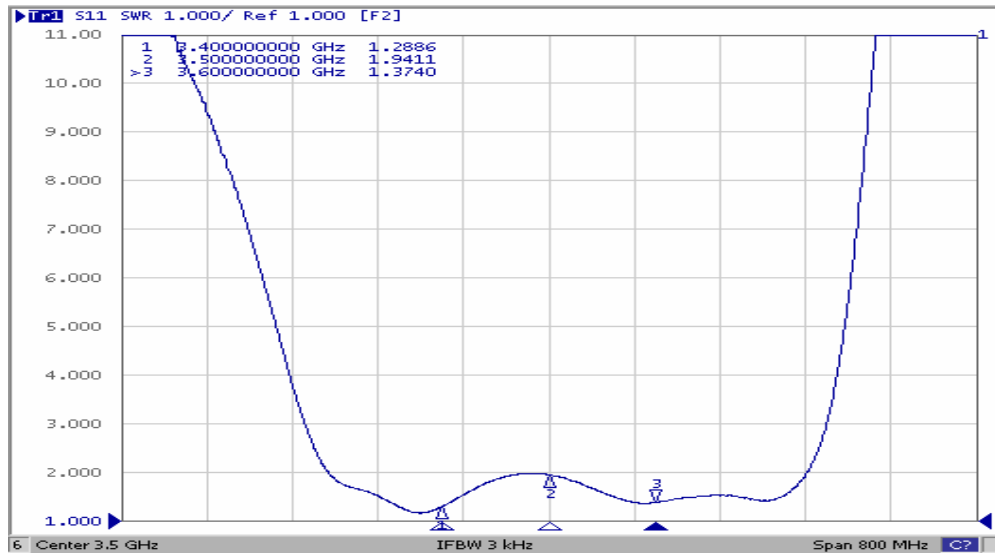
Item	Unit	Min.	Typ.	Max.
Center frequency Fc	MHz	-	3500	-
Insertion loss (3400~3600 MHz) IL	dB	-	3.7	5.0
Amplitude ripple (3400~3600 MHz)	dB _{p-p}	-	0.4	3.0
VSWR (3400~3600 MHz)	-	-	2.1	2.5
Absolute group delay (3400~3600 MHz)	ns		2	30
Group delay ripple (3400~3600 MHz)	ns	-	1.5	15
Attenuation (Reference level from 0dB)				
10 ~ 2550 MHz	dB	23	27	-
2550 ~ 2690 MHz	dB	25	28	-
2690 ~ 3000 MHz	dB	25	29	-
3000 ~ 3200 MHz	dB	10	31	-
3800 ~ 3850 MHz	dB	10	40	-
3850 ~ 4200 MHz	dB	20	38	-
4200 ~ 5000 MHz	dB	25	32	-
5000 ~ 6000 MHz	dB	25	30	-
Temperature Coefficient of Frequency	Ppm/°C	-	-80	-

C. Frequency Characteristics:

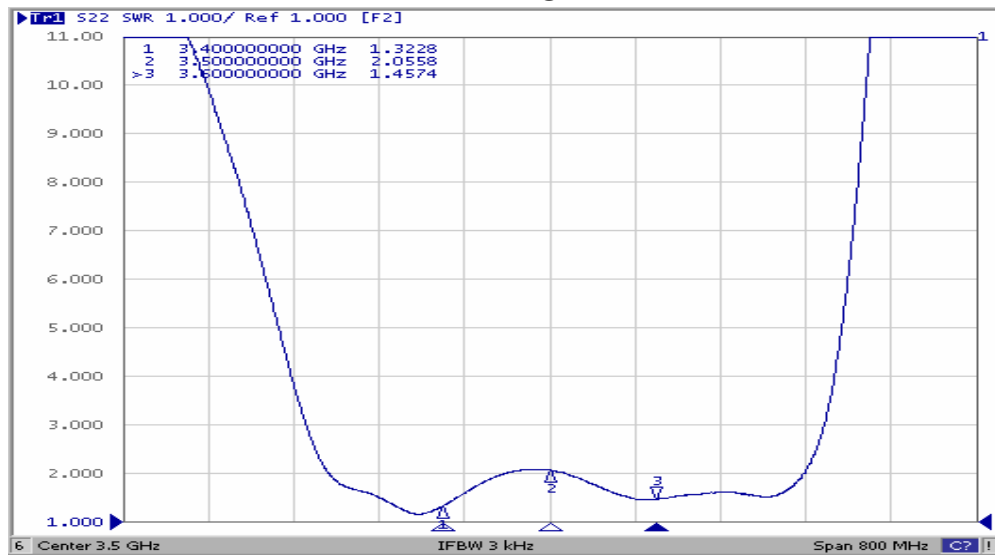


Reflection Functions:

S11

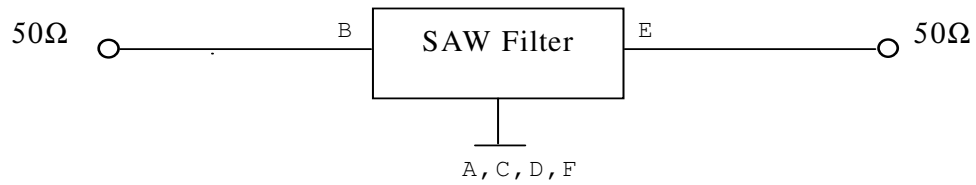


S22

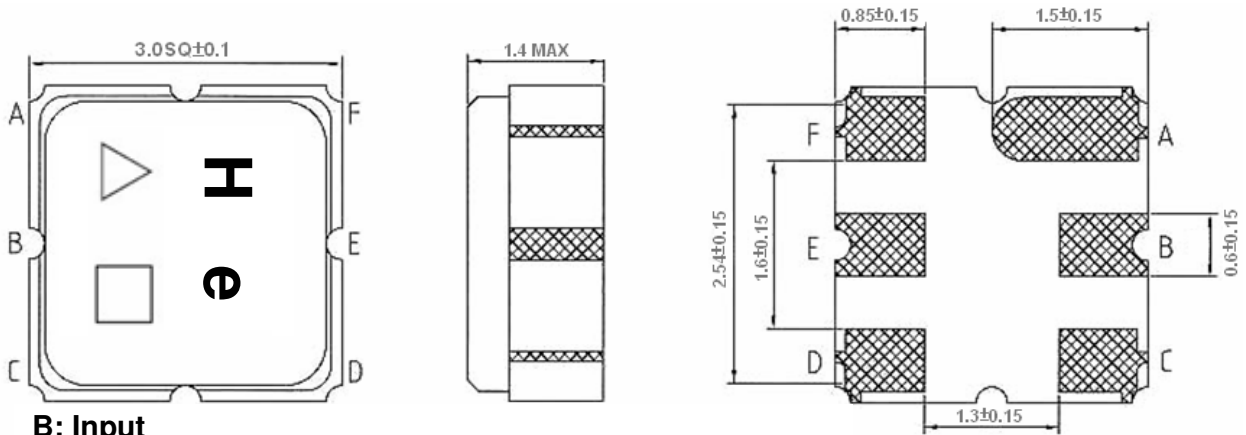


D. MEASUREMENT CIRCUIT:

HP Network analyzer



E. OUTLINE DRAWING:



B: Input

E: Output

A, C, D, F: Ground

Unit: mm

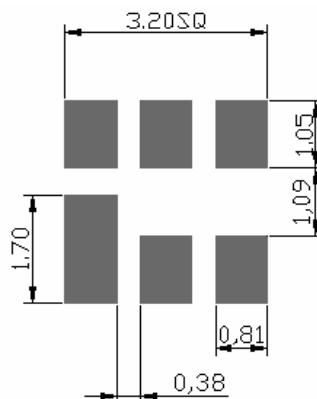
△ : Year Code (2011->1, 2012->2, ..., 2019->9, 2020->0)

□ : Date Code

Date Code Table:

WK01	WK02	WK03	WK04	WK05	WK06	WK07	WK08	WK09	WK10	WK11	WK12	WK13
A	B	C	D	E	F	G	H	I	J	K	L	M
WK14	WK15	WK16	WK17	WK18	WK19	WK20	WK21	WK22	WK23	WK24	WK25	WK26
N	O	P	Q	R	S	T	U	V	W	X	Y	Z
WK27	WK28	WK29	WK30	WK31	WK32	WK33	WK34	WK35	WK36	WK37	WK38	WK39
a	b	c	d	e	f	g	h	i	j	k	l	m
WK40	WK41	WK42	WK43	WK44	WK45	WK46	WK47	WK48	WK49	WK50	WK51	WK52
n	o	p	q	r	s	t	u	v	w	x	y	z

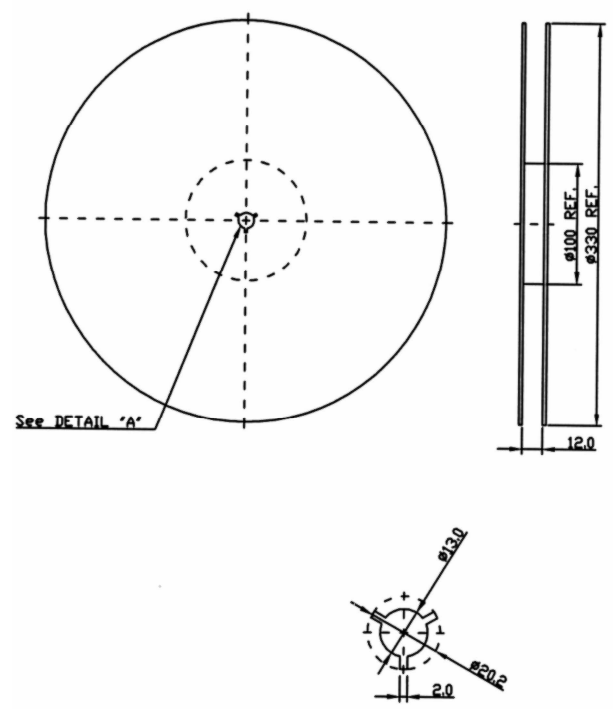
F. PCB Footprint:



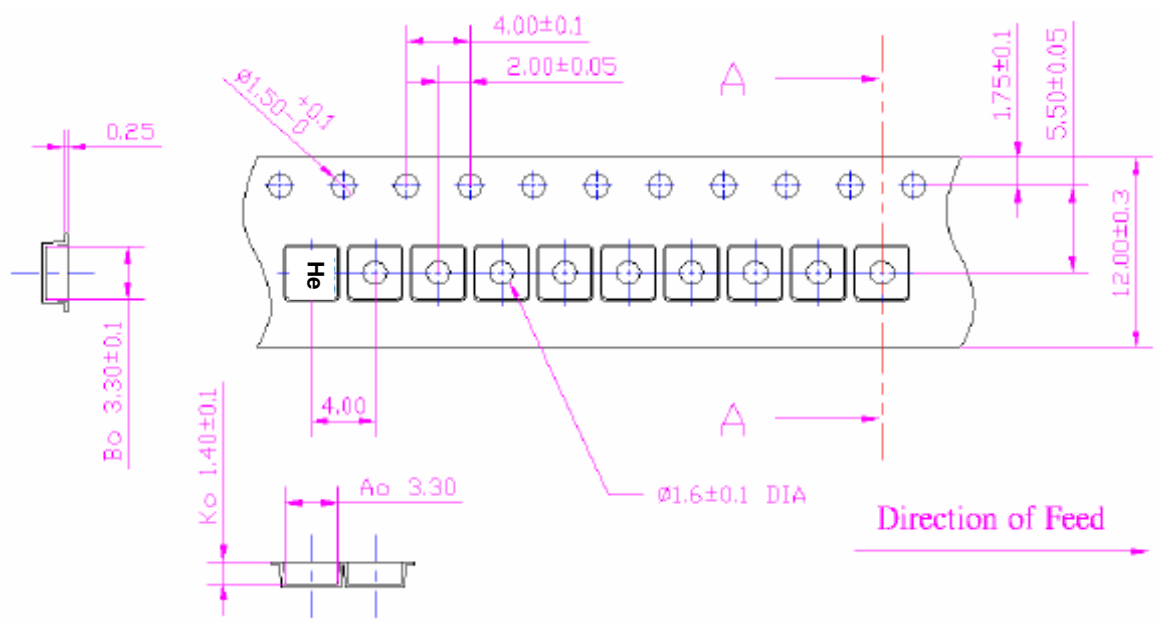
G. PACKING: (Ref. WI-75M03)

1. REEL DIMENSION

(Please refer to FR-75D10 for packing quantity)



2. TAPE DIMENSION



H. Recommended Reflow Profile:

1. Preheating shall be fixed at 150~180°C for 60~90 seconds.
2. Ascending time to preheating temperature 150°C shall be 30 seconds min.
3. Heating shall be fixed at 220°C for 50~80 seconds and at 260°C+0/-5°C peak (20~40sec).
4. Time: 2 times.

