



U74HC373

CMOS IC

OCTAL D-TYPE TRANSPARENT LATCH

DESCRIPTION

The **U74HC373** consists of eight D-type transparent latches with 3-state outputs. When latched enable (LE) is high, the latches operate at the transparent mode, and the latches' output will change

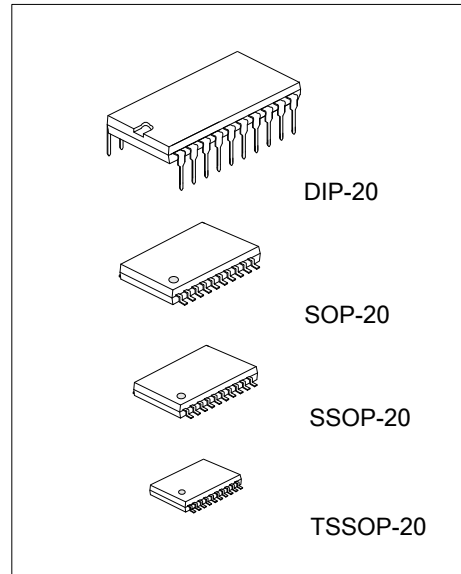
corresponding with the data present at D0 to D7. When output enable (\overline{OE}) is low, the contents of the latches will be present at the outputs. The outputs will be in the high impedance when \overline{OE} goes high.

FEATURES

- * Operation Voltage Range: 2~6V
- * Drive Up to 15 LSTTL Loads
- * 3-State Outputs
- * Output Capability Suitable for Bus Driving

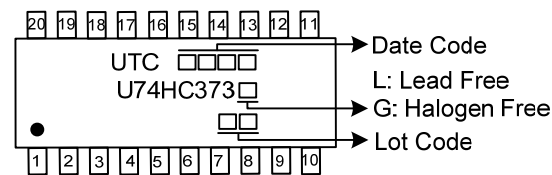
ORDERING INFORMATION

| Ordering Number | | Package | Packing |
|-----------------|-----------------|----------|-----------|
| Lead Free | Halogen Free | | |
| U74HC373L-D20-T | U74HC373G-D20-T | DIP-20 | Tube |
| U74HC373L-S20-R | U74HC373G-S20-R | SOP-20 | Tape Reel |
| U74HC373L-R20-R | U74HC373G-R20-R | SSOP-20 | Tape Reel |
| U74HC373L-P20-R | U74HC373G-P20-R | TSSOP-20 | Tape Reel |

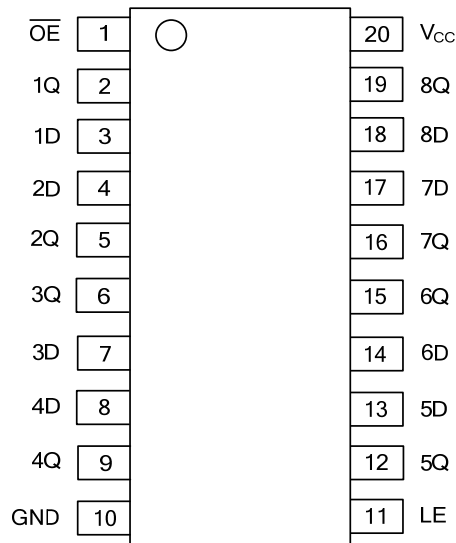


| | |
|---|--|
| <p>U74HC373G-D20-T</p> <p>(1) Packing Type (2) Package Type (3) Green Package</p> | <p>(1) R: Tape Reel, T: Tube (2) D20: DIP-20, P20: TSSOP-20, R20: SSOP-20, S20: SOP-20 (3) G: Halogen Free and Lead Free, L: Lead Free</p> |
|---|--|

MARKING



■ PIN CONFIGURATION

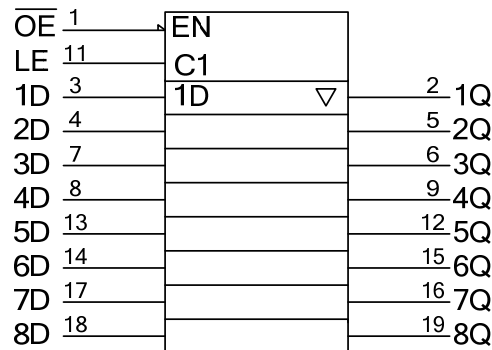


■ FUNCTION TABLE

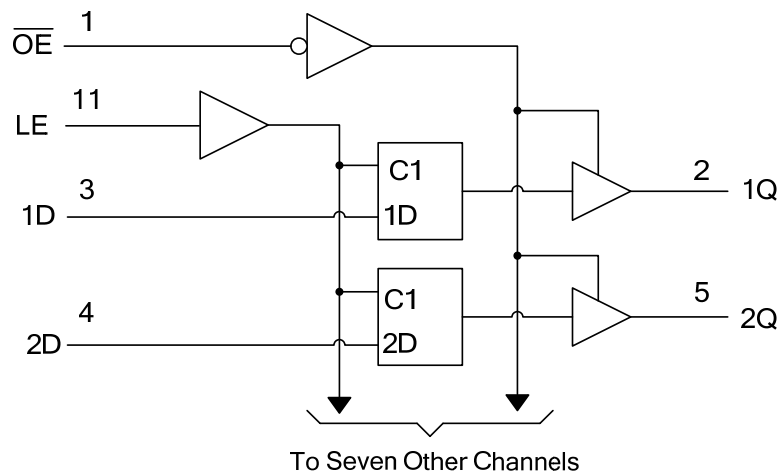
| INPUTS(OE) | INPUTS(LE) | INPUTS(D) | OUTPUT(Q) |
|------------|------------|-----------|----------------|
| L | H | H | H |
| L | H | L | L |
| L | L | X | Q ₀ |
| H | X | X | Z |

Note: H: HIGH voltage level; L: LOW voltage level.

■ LOGIC SYMBOL



■ LOGIC DIAGRAM



■ ABSOLUTE MAXIMUM RATING (T_A=25°C, unless otherwise specified)

| PARAMETER | SYMBOL | RATINGS | UNIT |
|--------------------------------|------------------|-------------|------|
| Supply Voltage | V _{CC} | -0.5 ~ 7 | V |
| V _{CC} or GND Current | I _{CC} | ±70 | mA |
| Output Current | I _{OUT} | ±35 | mA |
| Input Clamp Current | I _{IK} | ±20 | mA |
| Output Clamp Current | I _{OK} | ±20 | mA |
| Operating Temperature | T _{OPR} | -40 ~ + 85 | °C |
| Storage Temperature | T _{STG} | -65 ~ + 150 | °C |

Note: Absolute maximum ratings are those values beyond which the device could be permanently damaged.
 Absolute maximum ratings are stress ratings only and functional device operation is not implied.

■ THERMAL DATA

| PARAMETER | SYMBOL | RATINGS | UNIT |
|---------------------|----------|-----------------|------|
| Junction to Ambient | DIP-20 | θ _{JA} | °C/W |
| | SOP-20 | | |
| | SSOP-20 | | |
| | TSSOP-20 | | |

■ RECOMMENDED OPERATING CONDITIONS (T_A=25°C, unless otherwise specified)

| PARAMETER | SYMBOL | TEST CONDITIONS | MIN | TYP | MAX | UNIT |
|--------------------------|---------------------------------|-----------------------|------|-----|-----------------|------|
| Supply Voltage | V _{CC} | | 2 | 5 | 6 | V |
| High-level Input Voltage | V _{IH} | V _{CC} =2.0V | 1.5 | | | V |
| | | V _{CC} =4.5V | 3.15 | | | |
| | | V _{CC} =6.0V | 4.2 | | | |
| Low-level Input Voltage | V _{IL} | V _{CC} =2.0V | 0 | | 0.5 | V |
| | | V _{CC} =4.5V | 0 | | 1.35 | |
| | | V _{CC} =6.0V | 0 | | 1.8 | |
| Input Voltage | V _{IN} | | 0 | | V _{CC} | V |
| Output Voltage | V _{OUT} | High or low state | 0 | | V _{CC} | V |
| Input Rise or Fall Times | t _R , t _F | V _{CC} =2.0V | | | 1 | µs |
| | | V _{CC} =4.5V | | | 0.5 | |
| | | V _{CC} =6.0V | | | 0.4 | |

■ ELECTRICAL CHARACTERISTICS (T_A=25°C, unless otherwise specified)

| PARAMETER | SYMBOL | TEST CONDITIONS | MIN | TYP | MAX | UNIT |
|--------------------------------|----------------------|---|------|-------|------|------|
| Output Voltage High-Level | V _{OH} | V _{CC} =2.0V | 1.9 | 1.998 | | V |
| | | V _{CC} =4.5V | 4.4 | 4.499 | | |
| | | V _{CC} =6.0V | 5.9 | 5.999 | | |
| | | V _{CC} =4.5V, I _{OH} =-20µA, V _{IN} =V _{IH} or V _{IL} | 3.98 | 4.3 | | |
| | | V _{CC} =6.0V, I _{OH} =-7.8mA, V _{IN} =V _{IH} or V _{IL} | 5.48 | 5.8 | | |
| Output Voltage Low-Level | V _{OL} | V _{CC} =2.0V | | 2 | 100 | mV |
| | | V _{CC} =4.5V | | 1 | 100 | |
| | | V _{CC} =6.0V | | 1 | 100 | |
| | | V _{CC} =4.5V, I _{OL} =6mA, V _{IN} =V _{IH} or V _{IL} | | 170 | 260 | |
| | | V _{CC} =6.0V, I _{OL} =7.8mA, V _{IN} =V _{IH} or V _{IL} | | 150 | 260 | |
| Input Leakage Current | I _{I(LEAK)} | V _{CC} =6.0V, V _{IN} =V _{CC} or 0 | | ±0.1 | ±100 | nA |
| Disable Output Leakage Current | I _{OZ} | V _{CC} =6.0V, V _{OUT} =V _{CC} or 0 | | ±0.01 | ±0.5 | µA |
| Quiescent Supply Current | I _Q | V _{CC} =6.0V, V _{IN} =V _{CC} or 0, I _{OUT} =0 | | | 8 | µA |
| Input Capacitance | C _{IN} | V _{CC} =2.0V~6.0V | | 3 | 10 | pF |

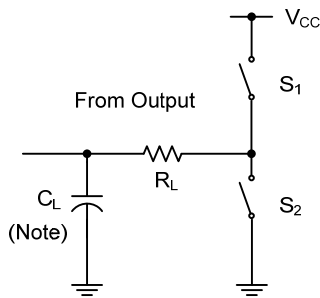
■ SWITCHING CHARACTERISTICS (see test circuit and waveforms)

| PARAMETER | SYMBOL | TEST CONDITIONS | MIN | TYP | MAX | UNIT | |
|--|-------------------|-----------------|---------------|---------------|-----|------|-----|
| Propagation delay from input (D) to output (Q) | t_{PLH}/t_{PHL} | $V_{CC}=2.0V$ | | 58 | 150 | ns | |
| | | $V_{CC}=4.5V$ | | 15 | 30 | | |
| | | $V_{CC}=6.0V$ | | 13 | 26 | | |
| | | $V_{CC}=2.0V$ | | 82 | 200 | | |
| | | $V_{CC}=4.5V$ | | 22 | 40 | | |
| | | $V_{CC}=6.0V$ | | 19 | 34 | | |
| Propagation delay from input (LE) to output (Q) | | $C_L=50pF$ | $V_{CC}=2.0V$ | 73 | 175 | | |
| | | | $V_{CC}=4.5V$ | 18 | 35 | | |
| | | | $V_{CC}=6.0V$ | 15 | 30 | | |
| | | | $C_L=150pF$ | $V_{CC}=2.0V$ | 100 | | 225 |
| | | | | $V_{CC}=4.5V$ | 24 | | 45 |
| | | | | $V_{CC}=6.0V$ | 20 | | 38 |
| Output enable time from input (\overline{OE}) to output (Q) | t_{PZL}/t_{PZH} | $V_{CC}=2.0V$ | | 65 | 150 | ns | |
| | | $V_{CC}=4.5V$ | | 17 | 30 | | |
| | | $V_{CC}=6.0V$ | | 14 | 26 | | |
| | | $C_L=150pF$ | | $V_{CC}=2.0V$ | 90 | | 200 |
| | | | | $V_{CC}=4.5V$ | 23 | | 40 |
| | | | | $V_{CC}=6.0V$ | 19 | | 34 |
| Output disable time from input (\overline{OE}) to output (Q) | t_{PLZ}/t_{PHZ} | $V_{CC}=2.0V$ | $C_L=50pF$ | 50 | 150 | ns | |
| | | $V_{CC}=4.5V$ | | 15 | 30 | | |
| | | $V_{CC}=6.0V$ | | 13 | 26 | | |
| to Q | t_r | $V_{CC}=2.0V$ | $C_L=150pF$ | 28 | 60 | ns | |
| | | $V_{CC}=4.5V$ | | 8 | 12 | | |
| | | $V_{CC}=6.0V$ | | 6 | 10 | | |
| Pulse Width | t_w | $V_{CC}=2.0V$ | | 80 | | ns | |
| | | $V_{CC}=4.5V$ | | 16 | | | |
| | | $V_{CC}=6.0V$ | | 14 | | | |
| Setup Time | t_{SU} | $V_{CC}=2.0V$ | | 50 | | ns | |
| | | $V_{CC}=4.5V$ | | 10 | | | |
| | | $V_{CC}=6.0V$ | | 9 | | | |
| Hold Time | t_H | $V_{CC}=2.0V$ | | 20 | | ns | |
| | | $V_{CC}=4.5V$ | | 10 | | | |
| | | $V_{CC}=6.0V$ | | 10 | | | |

■ OPERATING CHARACTERISTICS ($T_A=25^\circ C$, unless otherwise specified)

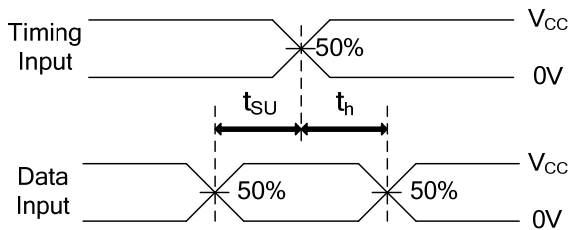
| PARAMETER | SYMBOL | TEST CONDITIONS | MIN | TYP | MAX | UNIT |
|-------------------------------|----------|-----------------|-----|-----|-----|------|
| Power Dissipation Capacitance | C_{PD} | No Load | | 100 | | pF |

■ TEST CIRCUIT AND WAVEFORMS

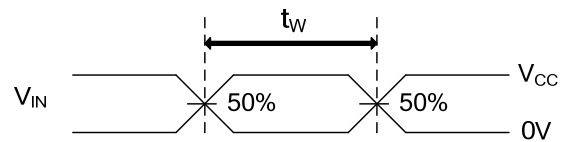


TEST CIRCUIT

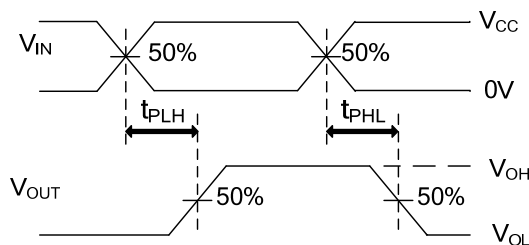
| | R_L | C_L | S_1 | S_2 |
|-----------|-------------|-------|--------|--------|
| t_{PZH} | 1k Ω | 50pF, | Open | Closed |
| t_{PZL} | | 150pF | Closed | Open |
| t_{PHZ} | 1k Ω | 50pF | Open | Closed |
| t_{PLZ} | | 150pF | Closed | Open |
| t_{PHL} | - | 50pF, | Open | Open |
| t_{PLH} | | 150pF | | |



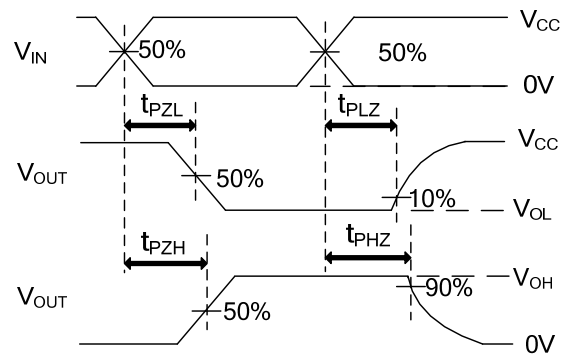
SETUP TIME AND HOLD TIME



PULSE WIDTH



PROPAGATION DELAY TIMES



ENABLE AND DISABLE TIMES

Note: C_L includes probe and jig capacitance.
 $PRR \leq 1\text{MHz}$, $Z_o = 50\Omega$, $t_R = 6\text{ns}$, $t_F = 6\text{ns}$

UTC assumes no responsibility for equipment failures that result from using products at values that exceed, even momentarily, rated values (such as maximum ratings, operating condition ranges, or other parameters) listed in products specifications of any and all UTC products described or contained herein. UTC products are not designed for use in life support appliances, devices or systems where malfunction of these products can be reasonably expected to result in personal injury. Reproduction in whole or in part is prohibited without the prior written consent of the copyright owner. UTC reserves the right to make changes to information published in this document, including without limitation specifications and product descriptions, at any time and without notice. This document supersedes and replaces all information supplied prior to the publication hereof.