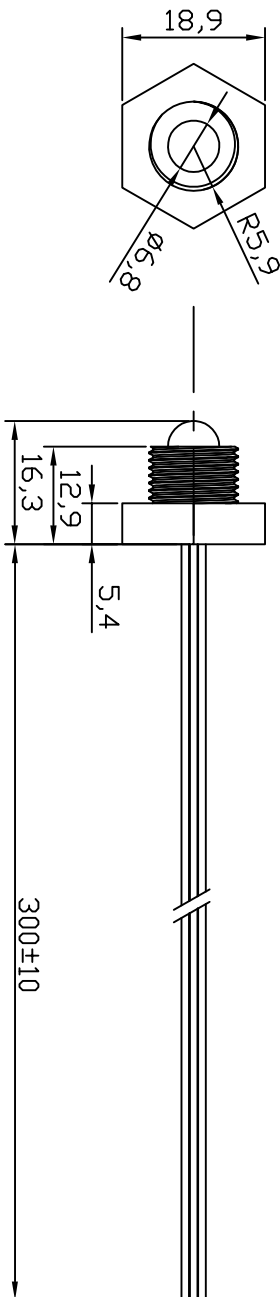


Unit: mm

应用领域

家电、汽车、医疗、工业控制等

# FAST-LLP-M02



供电电压	Supply Vtage	5-12VDC	负载能力 Load Capacity	40mA/30VDC (MAX)	深圳市法思特传感器有限公司 SHENZHEN FAST SENSOR CO., LTD.			
开关电流	Switching Current	<11mA	输出 Output	High/Low Level				
工作温度	Operating Temp	-20~85℃	本体材料 Body Material	PC/聚枫	TITLE Photoelectric Liquid Level Sensors 光电液位传感器			
电线	Wire	24AWG UL 1007	安装方式 Mounting Type	M12				
测量精度	Measuring Accuracy	±1mm	Drawn by	Reviewed by	Approved by	PART NO.	SCALE	REV.
性能参数	SPECIFICATION		SYP/2018-10-23	FXP/2018-10-23	LJ / 2018-10-23	FAST-LLP-M02	1:1	00
					www.szfast.com			