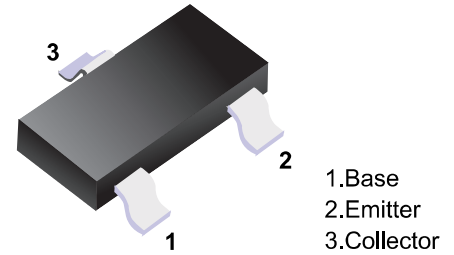


■ PNP Transistors

Features

- Suitable for driver stage of small motor.
- Small package.



■ Simplified outline(SOT-23)

■ Absolute Maximum Ratings Ta = 25°C

Parameter	Symbol	Rating	Unit
Collector-base voltage	V _{CB0}	-15	V
Collector-emitter voltage	V _{CEO}	-15	V
Emitter-base voltage	V _{EBO}	-5	V
Collector current	I _C	-800	mA
Base current	I _B	-160	mA
Collector dissipation	P _C	200	mW
Junction temperature	T _j	150	°C
Storage temperature	T _{stg}	-55 to +150	°C

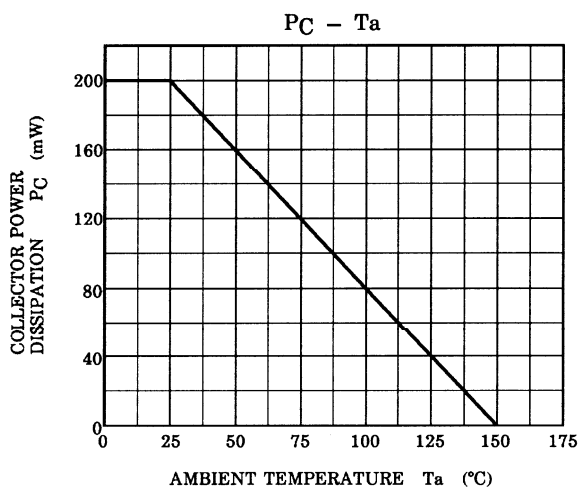
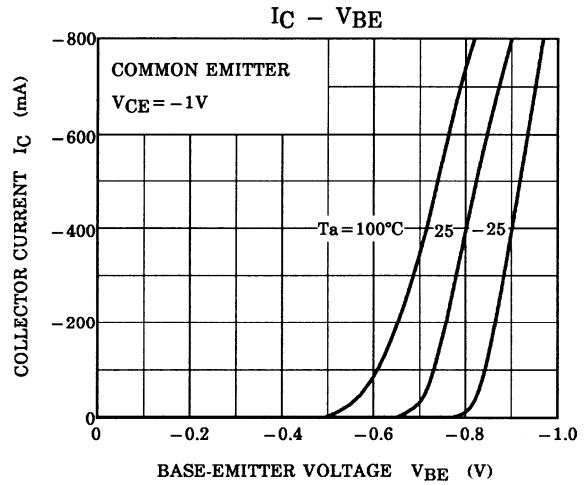
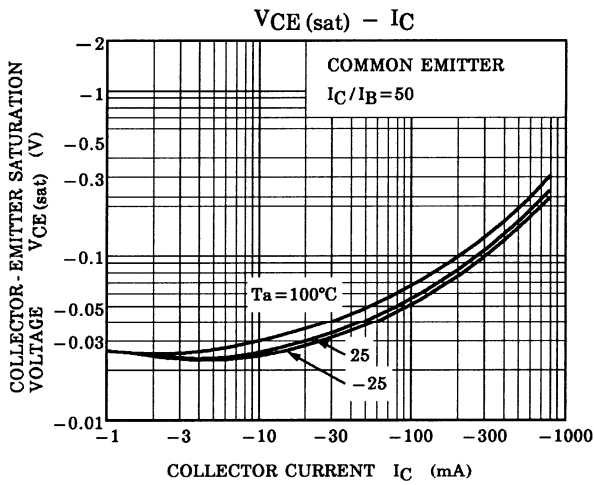
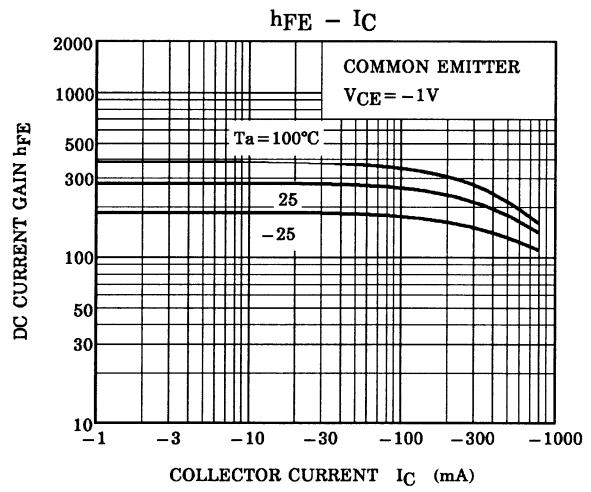
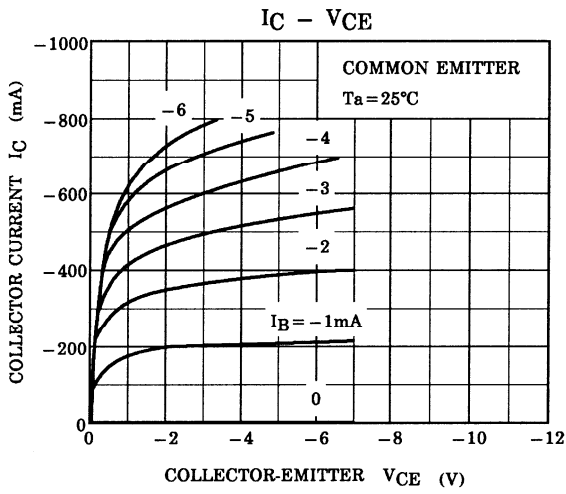
■ Electrical Characteristics Ta = 25°C

Parameter	Symbol	Test Conditions	Min	Typ	Max	Unit
Collector- base breakdown voltage	V _{CB0}	I _C = -100 μA, I _E =0	-15			V
Collector- emitter breakdown voltage	V _{CEO}	I _C = -10 mA, I _B =0	-15			
Emitter - base breakdown voltage	V _{EBO}	I _E = -100 μA, I _C =0	-5			
Collector-base cut-off current	I _{CB0}	V _{CB} = -15 V, I _E =0			-100	nA
Emitter cut-off current	I _{EBO}	V _{EB} = -5V, I _C =0			-100	
Collector-emitter saturation voltage	V _{CE(sat)}	I _C =-400 mA, I _B =- 8mA			-0.2	V
Base-emitter saturation voltage	V _{BE(sat)}	I _C =-400 mA, I _B =- 8mA			-1.2	
Base - emitter voltage	V _{BE}	V _{CE} = -1V, I _C = -10 mA	-0.5		-0.8	
DC current gain	h _{FE}	V _{CE} = -1V, I _C = -100mA	120		400	
		V _{CE} = -1V, I _C = -800mA	40			
Common base output capacitance	C _{ob}	V _{CB} = -10V, I _E = 0,f=1MHz		13		pF
Transition frequency	f _t	V _{CB} = -5V,I _C =-10mA		120		MHz

■ Classification of h_{FE}

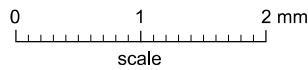
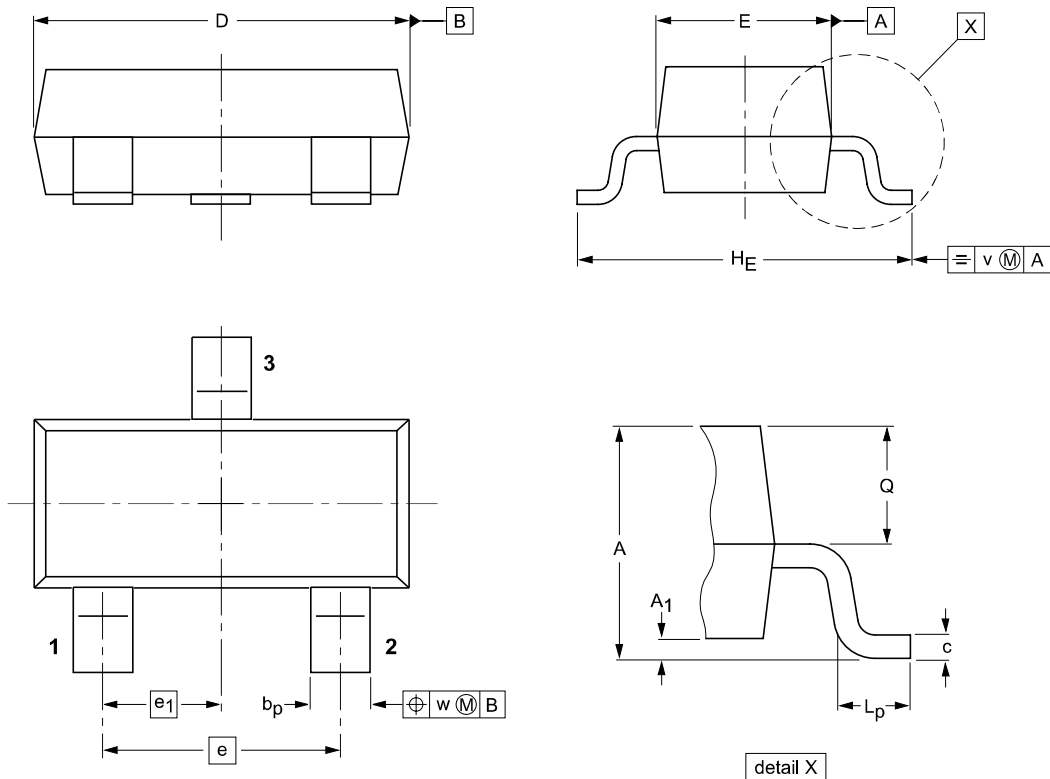
Type	2SA1362-Y	2SA1362-G
Range	120-240	200-400
Marking	AEY	AEG

■ Typical Characteristics



Package Outline

SOT-23



DIMENSIONS (mm are the original dimensions)

UNIT	A	A ₁ max.	b _p	c	D	E	e	e ₁	H _E	L _p	Q	v	w
mm	1.1 0.9	0.1	0.48 0.38	0.15 0.09	3.0 2.8	1.4 1.2	1.9	0.95	2.5 2.1	0.45 0.15	0.55 0.45	0.2	0.1

Summary of Packing Options

Package	Packing Description	Packing Quantity	Industry Standard
SOT-23	Tape/Reel,7"reel	3000	EIA-481-1