

■ PNP Transistors

- Features
- Complimentary to B772



■ Simplified outline(SOT-23)

■ Absolute Maximum Ratings Ta = 25°C

Symbol	Parameter	Value	Units
VCBO	Collector-Base Voltage	40	V
VCEO	Collector-Emitter Voltage	25	V
VEBO	Emitter-Base Voltage	5	V
IC	Collector Current -Continuous	1.5	A
PC	Collector Power Dissipation	0.3	W
Tj	Junction Temperature	150	°C
Tstg	Storage Temperature	-55-150	°C

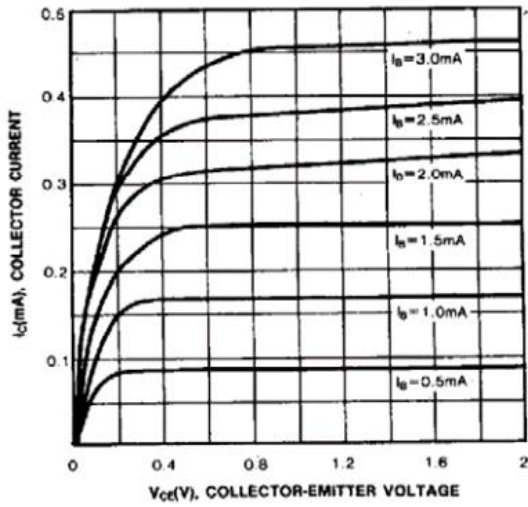
■ Electrical Characteristics Ta = 25°C

Parameter	Symbol	Test conditions	MIN	TYP	MAX	UNIT
Collector-base breakdown voltage	V(BR)CBO	IC= -100 A, IE=0	40			V
Collector-emitter breakdown voltage	V(BR)CEO	IC= -1mA, IB=0	25			V
Emitter-base breakdown voltage	V(BR)EBO	IE=-100 A, IC=0	5			V
Collector cut-off current	ICBO	VCB=-25 V , IE=0			1	μ A
Collector cut-off current	ICEO	VCE=-15V , IB=0			10	μ A
Emitter cut-off current	IEBO	VEB=-5V , IC=0			1	μ A
DC current gain	hFE	VCE=-1V, IC= -100mA	80		400	
Collector-emitter saturation voltage	VCE(sat)	IC=-800mA, IB= -80mA			0.5	V
Base-emitter saturation voltage	VBE(sat)	IC=-800mA, IB= -80mA			1.2	V

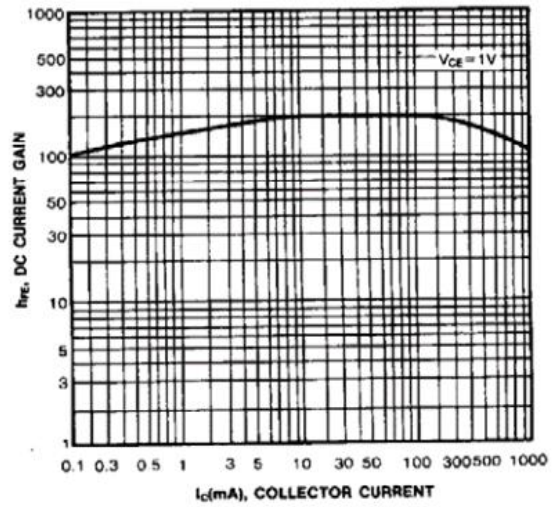
■ Classification of hfe

Range	80-100	100-200	200-400	400-600

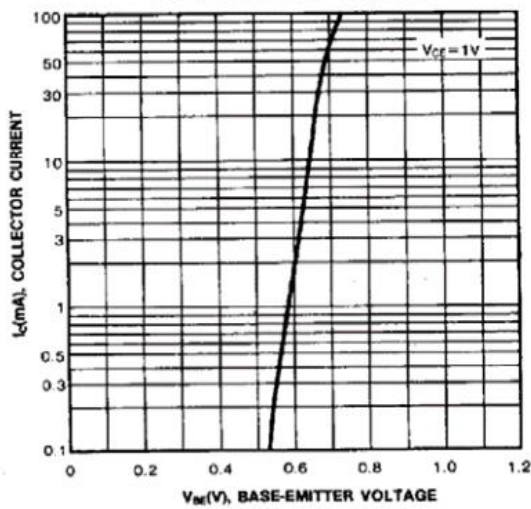
STATIC CHARACTERISTIC



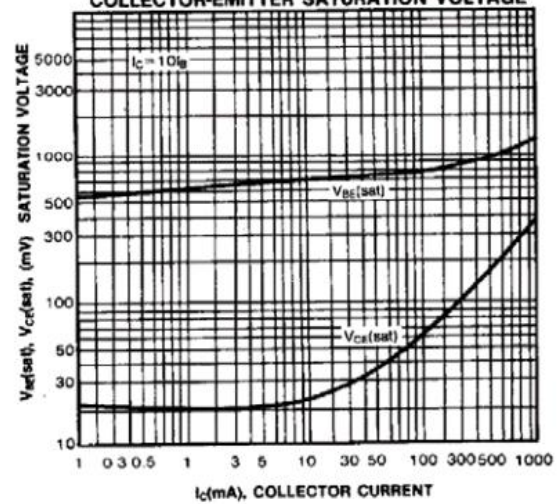
DC CURRENT GAIN



BASE-EMITTER ON VOLTAGE

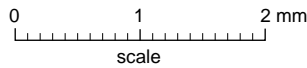


BASE-EMITTER SATURATION VOLTAGE
COLLECTOR-EMITTER SATURATION VOLTAGE



Package Outline

SOT-23



DIMENSIONS (mm are the original dimensions)

UNIT	A	A ₁ max.	b _p	c	D	E	e	e ₁	H _E	L _p	Q	v	w
mm	1.1 0.9	0.1	0.48 0.38	0.15 0.09	3.0 2.8	1.4 1.2	1.9	0.95	2.5 2.1	0.45 0.15	0.55 0.45	0.2	0.1

Summary of Packing Options

Package	Packing Description	Packing Quantity	Industry Standard
SOT-23	Tape/Reel, 7" reel	3000	EIA-481-1