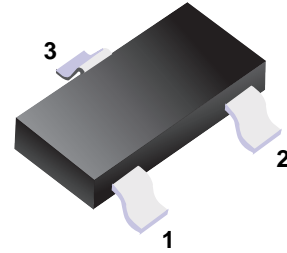


High Speed Switching Diode

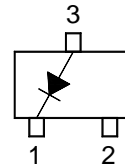
Features

Fast reverse recovery time: $t_{rr}=1.6ns$ (typ.)

Diode capacitance : $C_d=2.2pF$ (typ.)



■ Simplified outline(SOT-23)



Marking

Marking	D3
---------	----

Absolute Maximum Ratings $T_a = 25$

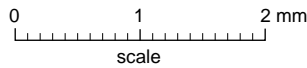
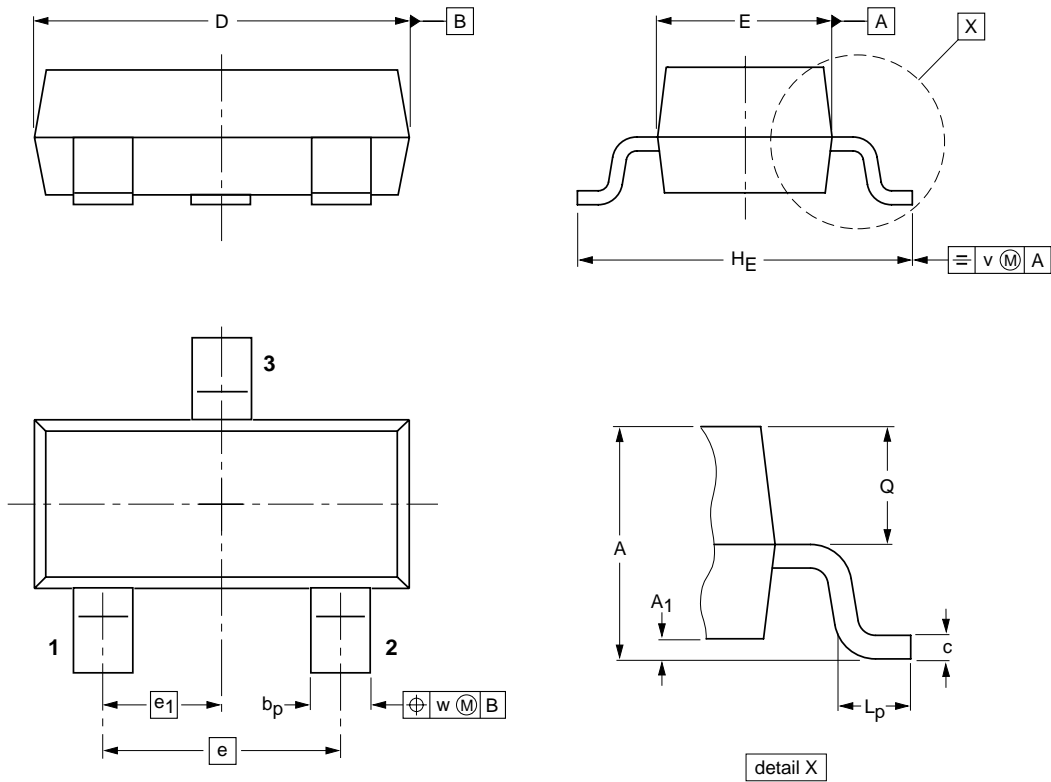
Parameter	Symbol	Rating	Unit
Maximum reverse voltage	V_{RM}	85	V
Reverse voltage	V_R	80	V
Average forward current	I_o	100	mA
Maximum forward current	I_{FM}	300	mA
Surge current	I_{FSM}	2	A
Power dissipation	P_D	150	mW
Junction temperature	T_J	125	
Storage temperature range	T_{sig}	-55 to 125	

Electrical Characteristics $T_a = 25$

Parameter	Symbol	Testconditons	Min	Typ	Max	Unit
Forward voltage	V_F	$I_F=1mA$		0.61		V
		$I_F=10mA$		0.74		
		$I_F=100mA$		0.92	1.2	
Reverse voltage leakage current	I_R	$V_R=30V$			0.1	μA
		$V_R=80V$			0.5	
Diode capacitance	C_D	$V_R=0V, f=1MHz$		2.2	4	pF
Reverse recovery time	t_{rr}	$I_F=10mA$		1.6	4	ns

Package Outline

SOT-23



DIMENSIONS (mm are the original dimensions)

UNIT	A	A ₁ max.	b _p	c	D	E	e	e ₁	H _E	L _p	Q	v	w
mm	1.1 0.9	0.1	0.48 0.38	0.15 0.09	3.0 2.8	1.4 1.2	1.9	0.95	2.5 2.1	0.45 0.15	0.55 0.45	0.2	0.1

Summary of Packing Options

Package	Packing Description	Packing Quantity	Industry Standard
SOT-23	Tape/Reel, 7" reel	3000	EIA-481-1