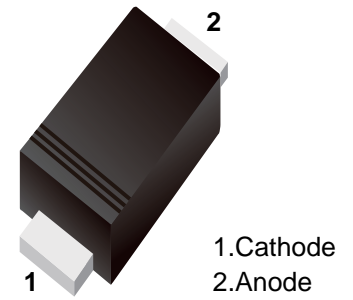


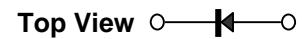
■ Switching Diodes

■ Features

- Fast Switching Speed
- High reliability



■ Simplified outline(SOD-523)



■ Absolute Maximum Ratings Ta = 25°C

Parameter	Symbol	Rating	Unit
Reverse voltage (Repetitive)	V _{RM}	90	V
Reverse voltage (DC)	V _R	80	
Average rectified forward current	I _o	100	mA
Forward voltage (Repetitive Peak)	I _{FM}	225	
Surge Current(t=1s)	I _{surge}	500	
Junction Temperature	T _J	125	°C
Storage Temperature range	T _{stg}	-55 to 125	

■ Electrical Characteristics Ta = 25°C

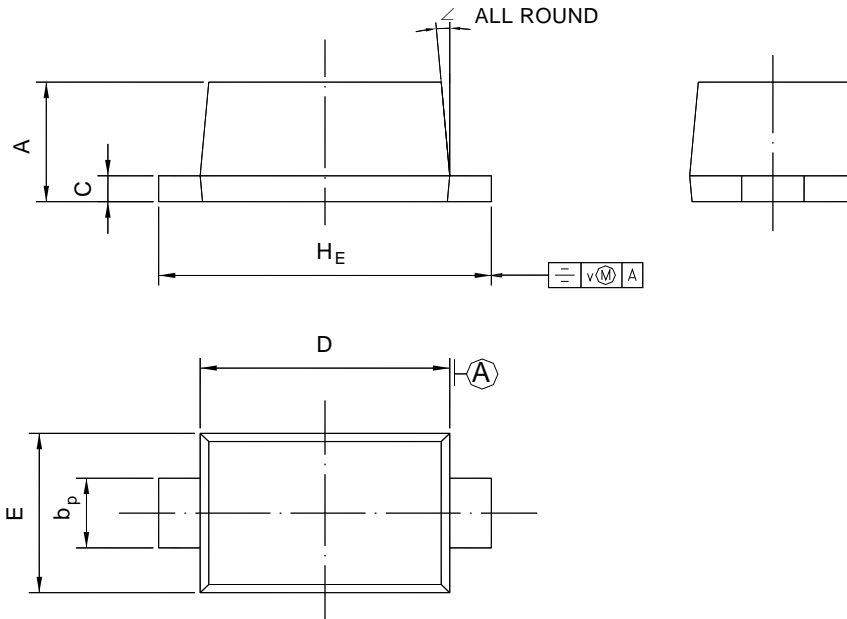
Parameter	Symbol	Test Conditions	Min	Typ	Max	Unit
Reverse breakdown voltage	V _R	I _R = 100 uA	90			V
Forward voltage	V _F	I _F = 100 mA			1.2	
Reverse voltage leakage current	I _R	V _R = 80 V			0.1	uA
Junction capacitance	C _j	V _R = 0.5 V, f= 1 MHz			3	pF
Reverse recovery time	t _{rr}	V _R =6V,I _F =10mA, R _L =100Ω			4	ns

■ Marking

Marking	A
---------	---

Package Outline SOD-523

Plastic surface mounted package; 2 leads



UNIT	A	b_p	C	D	E	H_E	V	\angle
mm	0.70	0.4	0.135	1.25	0.85	1.7	0.1	5°
	0.60	0.3	0.100	1.15	0.75	1.5		

Summary of Packing Options

Package	Packing Description	Packing Quantity	Industry Standard
SOD-523	Tape/Reel, 7" reel	3000	EIA-481-1