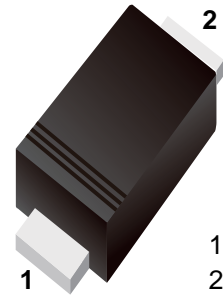


■ Switching Diodes

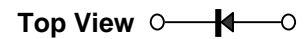
■ Features

- Fast Switching Speed
- High reliability



1.Cathode  
2.Anode

■ Simplified outline(SOD-523)



■ Absolute Maximum Ratings Ta = 25°C

Parameter	Symbol	Rating	Unit
Reverse voltage (Repetitive)	V <sub>RM</sub>	90	V
Reverse voltage (DC)	V <sub>R</sub>	80	
Average rectified forward current	I <sub>o</sub>	100	mA
Forward voltage (Repetitive Peak)	I <sub>FM</sub>	225	
Surge Current(t=1s)	I <sub>surge</sub>	500	
Junction Temperature	T <sub>J</sub>	125	°C
Storage Temperature range	T <sub>stg</sub>	-55 to 125	

■ Electrical Characteristics Ta = 25°C

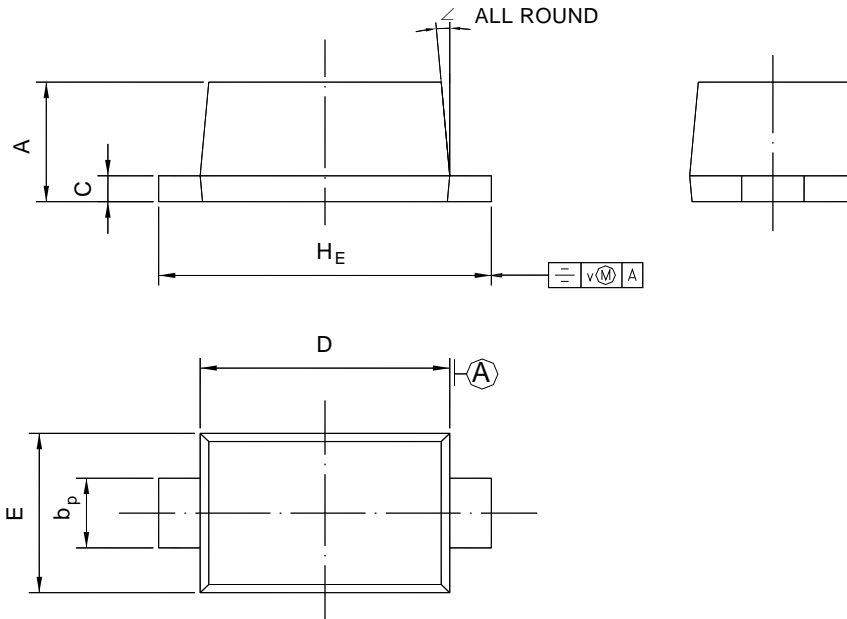
Parameter	Symbol	Test Conditions	Min	Typ	Max	Unit
Reverse breakdown voltage	V <sub>R</sub>	I <sub>R</sub> = 100 uA	90			V
Forward voltage	V <sub>F</sub>	I <sub>F</sub> = 100 mA			1.2	
Reverse voltage leakage current	I <sub>R</sub>	V <sub>R</sub> = 80 V			0.1	uA
Junction capacitance	C <sub>j</sub>	V <sub>R</sub> = 0.5 V, f= 1 MHz			3	pF
Reverse recovery time	t <sub>rr</sub>	V <sub>R</sub> =6V,I <sub>F</sub> =10mA, R <sub>L</sub> =100Ω			4	ns

■ Marking

Marking	A
---------	---

**Package Outline SOD-523**

Plastic surface mounted package; 2 leads



UNIT	A	$b_p$	C	D	E	$H_E$	V	$\angle$
mm	0.70	0.4	0.135	1.25	0.85	1.7	0.1	5°
	0.60	0.3	0.100	1.15	0.75	1.5		

**Summary of Packing Options**

Package	Packing Description	Packing Quantity	Industry Standard
SOD-523	Tape/Reel, 7" reel	3000	EIA-481-1