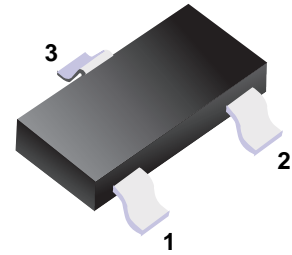


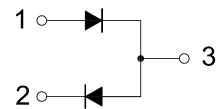
■ Switching Diodes

■ Features

- Dual Switching Diode
- Fast Switching Speed
- Surface Mount Package Ideally Suited for Automatic Insertion
- For General Purpose Switching Applications



■ Simplified outline(SOT-23)



■ Absolute Maximum Ratings Ta = 25°C

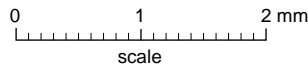
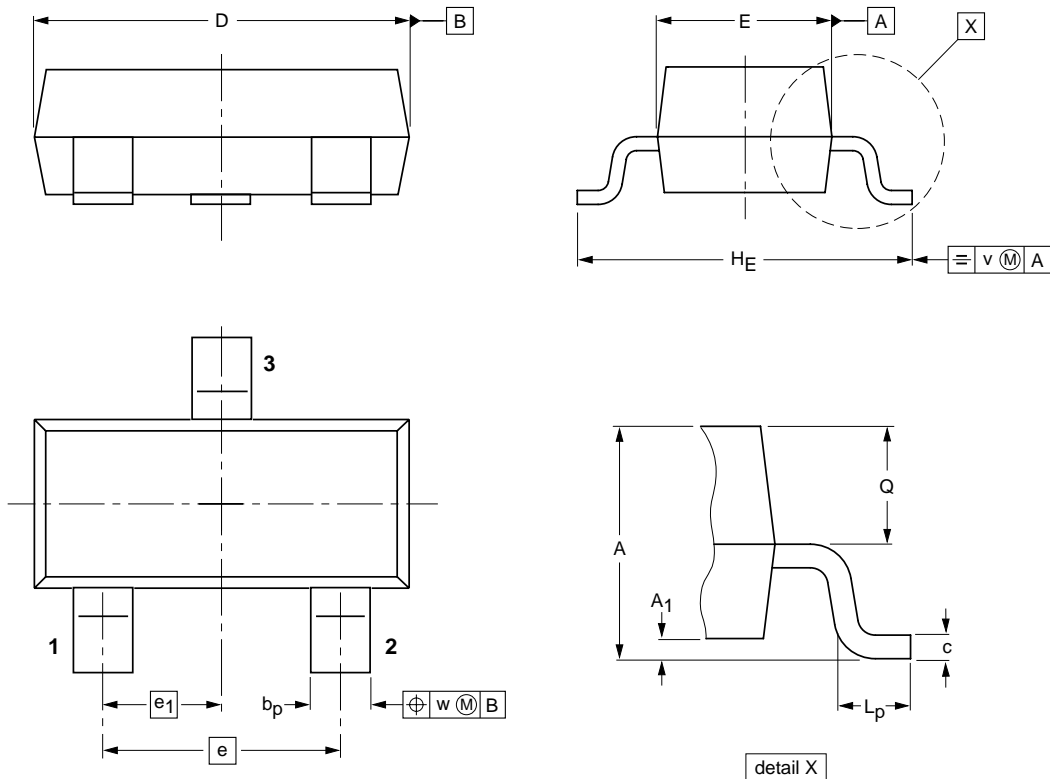
Parameter	Symbol	Rating	Unit
Reverse Voltage	V _{RM}	100	V
Peak Repetitive Reverse Voltage	V _{R RM}	75	
Working Peak Reverse Voltage	V _{R WM}		
RMS Reverse Voltage	V _{R MS}	53	
Average Rectified Output Current	I _O	200	mA
Non-Repetitive Peak Forward Surge Current @ t = 1us @ t = 1s	I _{F SM}	2	A
		1	
Power Dissipation	P _d	225	mW
Thermal Resistance Junction to Ambient	R _{θ JA}	556	°C/W
Junction Temperature	T _J	150	°C
Storage Temperature range	T _{stg}	-55 to 150	

■ Electrical Characteristics Ta = 25°C

Parameter	Symbol	Test Conditions	Min	Typ	Max	Unit
Reverse breakdown voltage	V _R	I _R = 100 uA	100			V
Forward voltage	V _F	I _F = 1 mA			0.7	
		I _F = 10 mA			0.82	
		I _F = 100 mA			1.1	
Reverse voltage leakage current	I _R	V _R = 50 V			1	uA
		V _R = 100 V			3	
Diode capacitance	C _T	V _R = 0 V, f= 1 MHz			2	pF
Reverse recovery time	t _{rr}	I _F =I _R =10mA, I _{rr} =0.1xI _R , R _L =100Ω			4	ns

Package Outline

SOT-23



DIMENSIONS (mm are the original dimensions)

UNIT	A	A ₁ max.	b _p	c	D	E	e	e ₁	H _E	L _p	Q	v	w
mm	1.1 0.9	0.1	0.48 0.38	0.15 0.09	3.0 2.8	1.4 1.2	1.9	0.95	2.5 2.1	0.45 0.15	0.55 0.45	0.2	0.1

Summary of Packing Options

Package	Packing Description	Packing Quantity	Industry Standard
SOT-23	Tape/Reel, 7" reel	3000	EIA-481-1