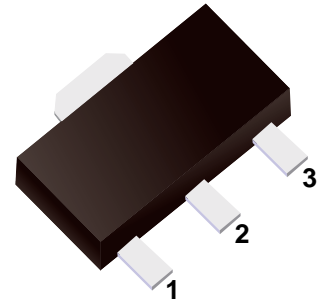


■ Three-Terminal Positive Voltage Regulator



1.OUT  
2.GND  
3.IN

■ Features

- Maximum Output current  $I_o$ : 0.1A
- Output Voltage  $V_o$ : 10V
- Continuous Total Dissipation  $P_d$ : 0.5W ( $T_a = 25^\circ\text{C}$ )

■ Simplified outline(SOT-89)

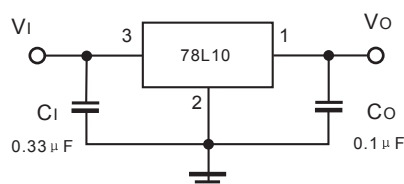
■ Absolute Maximum Ratings (Operating temperature range applies unless otherwise specified)

Parameter	Symbol	Rating	Unit
Input Voltage	$V_i$	30	V
Operating Junction Temperature Range	$T_{OPR}$	-55 ~ +125	$^\circ\text{C}$
Storage Temperature Range	$T_{STG}$	-55 ~ +150	$^\circ\text{C}$

■ Electrical Characteristics ( $V_i=17\text{V}$ ,  $I_o=40\text{mA}$ ,  $C_i=0.33\ \mu\text{F}$ ,  $C_o=0.1\ \mu\text{F}$ , unless otherwise specified)

Parameter	Symbol	Test conditions	Min	Typ	Max	Unit
Output Voltage	$V_o$	$T_J = 25^\circ\text{C}$	9.6	10	10.4	V
		$T_J = 0\sim 125^\circ\text{C}$ , $13\text{V} \leq V_i \leq 25\text{V}$ , $I_o=1\text{mA}\sim 40\text{mA}$	9.5	10	10.5	V
		$T_J = 0\sim 125^\circ\text{C}$ , $I_o=1\text{mA}\sim 70\text{mA}$	9.5	10	10.5	V
Load Regulation	$\Delta V_o$	$T_J = 25^\circ\text{C}$ , $I_o=1\text{mA}\sim 100\text{mA}$		20	90	mV
		$T_J = 25^\circ\text{C}$ , $I_o=1\text{mA}\sim 40\text{mA}$		11	40	mV
Line Regulation	$\Delta V_o$	$T_J = 25^\circ\text{C}$ , $13\text{V} \leq V_i \leq 25\text{V}$		51	175	mV
		$T_J = 25^\circ\text{C}$ , $14\text{V} \leq V_i \leq 25\text{V}$		42	125	mV
Quiescent Current	$I_q$	$T_J = 25^\circ\text{C}$		4.2	6.0	mA
Quiescent current Change	$\Delta I_q$	$T_J = 0\sim 125^\circ\text{C}$ , $14\text{V} \leq V_i \leq 25\text{V}$			1.5	mA
		$T_J = 0\sim 125^\circ\text{C}$ , $1\text{mA} \leq I_o \leq 40\text{mA}$			0.1	mA
Output Noise Voltage	$V_N$	$T_J = 25^\circ\text{C}$ , $10\text{Hz} \leq f \leq 100\text{KHz}$		62		$\mu\text{V}$
Ripple Rejection	RR	$T_J = 0\sim 125^\circ\text{C}$ , $15\text{V} \leq V_i \leq 25\text{V}$ , $f = 120\text{Hz}$	37	44		dB
Dropout Voltage	$V_D$	$T_J = 25^\circ\text{C}$		1.7		V

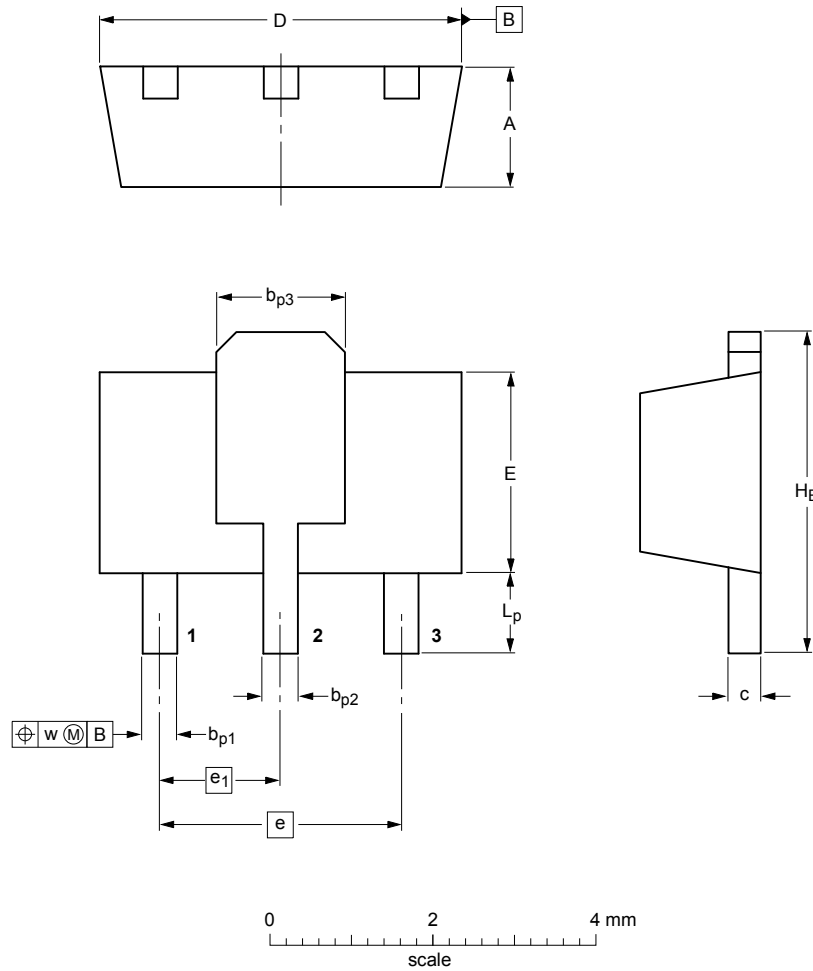
■ Typical Application



Note: Bypass capacitors are recommended for optimum stability and transient response and should be located as close as possible to the regulators.

Package Outline

SOT-89



DIMENSIONS (mm are the original dimensions)

UNIT	A	b <sub>p1</sub>	b <sub>p2</sub>	b <sub>p3</sub>	c	D	E	e	e <sub>1</sub>	H <sub>E</sub>	L <sub>p</sub>	w
mm	1.6 1.4	0.48 0.35	0.53 0.40	1.8 1.4	0.44 0.23	4.6 4.4	2.6 2.4	3.0	1.5	4.25 3.75	1.2 0.8	0.13

Summary of Packing Options

Package	Package Description	Packing Quantity	Industry Standard
SOT-89	Tape/Reel, 7" reel	1000	EIA-481-1