

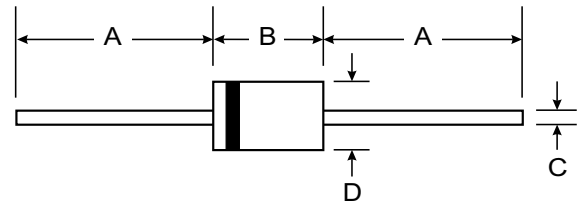
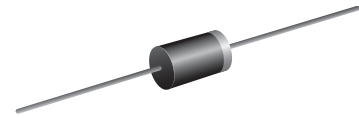
VOLTAGE RANGE: 800 - 1000V
CURRENT: 2.0 A

Features

- High current capability
- High surge current capability
- High reliability
- Low reverse current
- Low forward voltage drop
- Super fast recovery time

Mechanical Data

- Case : DO-15, Molded plastic
- Epoxy : UL94V-O rate flame retardant
- Lead : Axial lead solderable per MIL-STD-202, Method 208 guaranteed
- Polarity : Color band denotes cathode end
- Mounting position : Any
- Weight : 0.465 gram



DO-15		
Dim	Min	Max
A	25.40	—
B	5.50	7.62
C	0.686	0.889
D	2.60	3.60
All Dimensions in mm		

Maximum Ratings $T_A = 25^\circ\text{C}$ unless otherwise specified

RATING	SYMBOL	MUR208E	MUR2100E	UNIT
Maximum Recurrent Peak Reverse Voltage	VRRM	800	1000	Volts
Maximum RMS Voltage	VRMS	560	700	Volts
Maximum DC Blocking Voltage	VDC	800	1000	Volts
Maximum Average Forward Current 0.375"(9.5mm) Lead Length $T_a = 55^\circ\text{C}$	$I_{F(AV)}$	2.0		Amp.
Peak Forward Surge Current, 8.3ms Single half sine wave superimposed on rated load (JEDEC Method)	I_{FSM}	30		Amps.
Maximum Peak Forward Voltage at $I_F = 1.0\text{ A}$.	V_F	2.2		Volts
Maximum DC Reverse Current at Rated DC Blocking Voltage	I_R	10		μA
Maximum Reverse Recovery Time (Note 1)	T_{rr}	35		ns
Typical Junction Capacitance (Note 2)	C_J	50		pf
Junction Temperature Range	T_J	- 65 to + 150		$^\circ\text{C}$
Storage Temperature Range	T_{STG}	- 65 to + 150		$^\circ\text{C}$