

ZCHC Power Inductors

功率电感系列



Features

1. Excellent solderability and high heat resistance.
2. Excellent terminal strength construction.
3. Packed in embossed carrier tape and can be used by automatic mounting machine.

特征

1. 絕佳的焊錫性及高溫耐熱性。
2. 絕佳的端面強度結構。
3. 捲軸包裝，可用於自動插件機器。

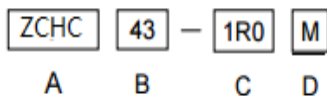
Applications

Power supply for VCR, OA equipment, LCD television set, notebook, DC to DC converters, DC to AC inverters etc.

用途

VCR、辦公室自動設備、液晶電視機、筆記型電腦、直流-直流整流器、直流-交流換流器等的電源供應器。

Featuring Part Numbering



A. Series

B. Dimension

A x C

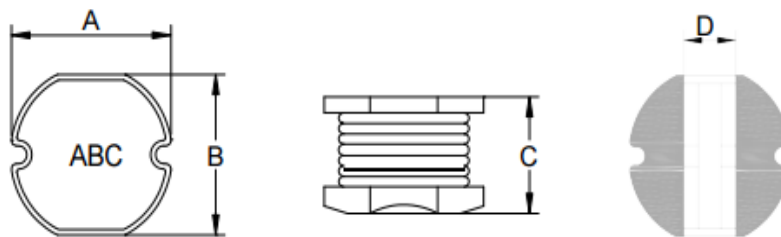
C. Inductance

1R0=1.0uH, 100=10uH, 101=100uH

D. Inductance Tolerance

K=±10%, M=±20%

Dimensions



Series	A	B	C	D ref
ZCHC31	3.5±0.3	3.0±0.3	1.6±0.3	1.0
ZCHC32	3.5±0.3	3.0±0.3	2.1±0.3	1.0
ZCHC42	4.5±0.3	4.0±0.3	2.0±0.3	1.4
ZCHC43	4.5±0.3	4.0±0.3	3.2±0.3	1.4
ZCHC52	5.8±0.3	5.2±0.3	2.0±0.3	1.6
ZCHC53	5.8±0.3	5.2±0.3	3.0±0.3	1.6
ZCHC54	5.8±0.3	5.2±0.3	4.5±0.3	1.6
ZCHC73	7.8±0.3	7.0±0.3	3.5±0.3	2.4
ZCHC75	7.8±0.3	7.0±0.3	5.0±0.3	2.4
ZCHC104	10.0±0.3	9.0±0.3	4.0±0.3	3.1
ZCHC105	10.0±0.3	9.0±0.3	5.4±0.3	3.1

Unit:mm

ZCHC 31 Series

Part Number	Inductance (uH)	Test Frequency (Hz)	DCR (Ω)max	IDC (A)max
ZCHC31-1R0M	1.0±20%	100K/0.3V	0.048	1.60
ZCHC31-1R5M	1.5±20%	100K/0.3V	0.078	1.55
ZCHC31-2R2M	2.2±20%	100K/0.3V	0.100	1.47
ZCHC31-3R3M	3.3±20%	100K/0.3V	0.126	1.34
ZCHC31-3R9M	3.9±20%	100K/0.3V	0.140	1.24
ZCHC31-4R7M	4.7±20%	100K/0.3V	0.158	1.22
ZCHC31-5R6M	5.6±20%	100K/0.3V	0.186	1.09
ZCHC31-6R8M	6.8±20%	100K/0.3V	0.213	0.96
ZCHC31-8R2M	8.2±20%	100K/0.3V	0.238	0.84
ZCHC31-100M	10±20%	1K/0.3V	0.307	0.70
ZCHC31-120M	12±20%	1K/0.3V	0.372	0.65
ZCHC31-150M	15±20%	1K/0.3V	0.466	0.59
ZCHC31-180M	18±20%	1K/0.3V	0.515	0.54
ZCHC31-220M	22±20%	1K/0.3V	0.656	0.48
ZCHC31-270M	27±20%	1K/0.3V	0.774	0.43
ZCHC31-330M	33±20%	1K/0.3V	1.021	0.37
ZCHC31-390M	39±20%	1K/0.3V	1.122	0.32
ZCHC31-470M	47±20%	1K/0.3V	1.509	0.26
ZCHC31-560M	56±20%	1K/0.3V	1.675	0.24
ZCHC31-680M	68±20%	1K/0.3V	1.919	0.23
ZCHC31-820M	82±20%	1K/0.3V	2.644	0.21
ZCHC31-101M	100±20%	1K/0.3V	2.870	0.19
ZCHC31-121M	120±20%	1K/0.3V	4.084	0.17
ZCHC31-151M	150±20%	1K/0.3V	4.774	0.16
ZCHC31-181M	180±20%	1K/0.3V	5.699	0.14

ZCHC32 Series

Part Number	Inductance (uH)	Test Frequency (Hz)	DCR (Ω)max	IDC (A)max
ZCHC32-1R0M	1.0±20%	100K/0.3V	0.035	3.34
ZCHC32-2R2M	2.2±20%	100K/0.3V	0.059	2.35
ZCHC32-3R3M	3.3±20%	100K/0.3V	0.098	1.83
ZCHC32-4R7M	4.7±20%	100K/0.3V	0.137	1.50
ZCHC32-5R6M	5.6±20%	100K/0.3V	0.157	1.36
ZCHC32-6R8M	6.8±20%	100K/0.3V	0.196	1.22
ZCHC32-8R2M	8.2±20%	100K/0.3V	0.230	1.09
ZCHC32-100M	10±20%	1K/0.3V	0.286	0.95
ZCHC32-120M	12±20%	1K/0.3V	0.322	0.88
ZCHC32-150M	15±20%	1K/0.3V	0.398	0.82
ZCHC32-180M	18±20%	1K/0.3V	0.520	0.76
ZCHC32-220M	22±20%	1K/0.3V	0.660	0.63
ZCHC32-270M	27±20%	1K/0.3V	0.760	0.62

ZCHC 32 Series

Part Number	Inductance (uH)	Test Frequency (Hz)	DCR (Ω)max	IDC (A)max
ZCHC 32-330M	33±20%	1K/0.3V	0.87	0.56
ZCHC 32-390M	39±20%	1K/0.3V	1.10	0.51
ZCHC 32-470M	47±20%	1K/0.3V	1.25	0.47
ZCHC 32-560M	56±20%	1K/0.3V	1.59	0.42
ZCHC 32-680M	68±20%	1K/0.3V	1.82	0.38
ZCHC 32-820M	82±20%	1K/0.3V	2.44	0.34
ZCHC 32-101M	100±20%	1K/0.3V	2.84	0.31
ZCHC 32-121M	120±20%	1K/0.3V	3.19	0.28
ZCHC 32-151M	150±20%	1K/0.3V	4.20	0.16
ZCHC 32-181M	180±20%	1K/0.3V	5.11	0.15
ZCHC 32-221M	220±20%	1K/0.3V	7.31	0.14
ZCHC 32-271M	270±20%	1K/0.3V	8.24	0.12
ZCHC 32-331M	330±20%	1K/0.3V	10.19	0.10

ZCHC 42 Series

Part Number	Inductance (uH)	Test Frequency (Hz)	DCR (Ω)max	IDC (A)max
ZCHC 42-2R7M	2.7±20%	100K/0.3V	0.065	1.50
ZCHC 42-4R7M	4.7±20%	100K/0.3V	0.095	1.40
ZCHC 42-100M	10±20%	1K/0.3V	0.18	0.97
ZCHC 42-220M	22±20%	1K/0.3V	0.45	0.60
ZCHC 42-260M	26±20%	1K/0.3V	0.47	0.55
ZCHC 42-330M	33±20%	1K/0.3V	0.50	0.54
ZCHC 42-390M	39±20%	1K/0.3V	0.70	0.50
ZCHC 42-470M	47±20%	1K/0.3V	0.80	0.48
ZCHC 42-560M	56±20%	1K/0.3V	0.90	0.45
ZCHC 42-101M	100±20%	1K/0.3V	1.50	0.10
ZCHC 42-151M	150±20%	1K/0.3V	2.30	0.09

ZCHC 43 Series

Part Number	Inductance (uH)	Test Frequency (Hz)	DCR (Ω)max	IDC (A)max
ZCHC 43-1R0M	1.0±20%	100K/0.3V	0.033	3.80
ZCHC 43-2R2M	2.2±20%	100K/0.3V	0.047	2.60
ZCHC 43-3R3M	3.3±20%	100K/0.3V	0.052	2.43
ZCHC 43-3R9M	3.9±20%	100K/0.3V	0.058	2.15
ZCHC 43-4R7M	4.7±20%	100K/0.3V	0.094	1.70
ZCHC 43-6R8M	6.8±20%	100K/0.3V	0.117	1.41
ZCHC 43-8R2M	8.2±20%	100K/0.3V	0.132	1.26

ZCHC 43 Series

Part Number	Inductance (uH)	Test Frequency (Hz)	DCR (Ω)max	IDC (A)max
ZCHC43-100M	10±20%	1K/0.3V	0.182	1.15
ZCHC43-120M	12±20%	1K/0.3V	0.210	1.05
ZCHC43-150M	15±20%	1K/0.3V	0.235	0.92
ZCHC 43-180M	18±20%	1K/0.3V	0.338	0.84
ZCHC43-220M	22±20%	1K/0.3V	0.378	0.76
ZCHC43-270M	27±20%	1K/0.3V	0.522	0.71
ZCHC43-330M	33±20%	1K/0.3V	0.540	0.64
ZCHC43-390M	39±20%	1K/0.3V	0.587	0.59
ZCHC43-470M	47±20%	1K/0.3V	0.844	0.54
ZCHC43-560M	56±20%	1K/0.3V	0.937	0.50
ZCHC43-680M	68±20%	1K/0.3V	1.117	0.46
ZCHC43-820M	82±20%	1K/0.3V	1.180	0.43
ZCHC43-101M	100±20%	1K/0.3V	1.190	0.41
ZCHC43-121M	120±20%	1K/0.3V	1.220	0.38
ZCHC43-151M	150±20%	1K/0.3V	1.400	0.35
ZCHC43-181M	180±20%	1K/0.3V	1.500	0.31
ZCHC43-221M	220±20%	1K/0.3V	1.641	0.29
ZCHC43-271M	270±20%	1K/0.3V	2.890	0.26
ZCHC43-331M	330±20%	1K/0.3V	3.760	0.20

ZCHC52 Series

Part Number	Inductance (uH)	Test Frequency (Hz)	DCR (Ω)max	IDC (A)max
ZCHC52-1R0M	1.0±20%	100K/0.3V	0.05	4.2
ZCHC52-2R2M	2.2±20%	100K/0.3V	0.08	3.2
ZCHC52-3R3M	3.3±20%	100K/0.3V	0.12	2.4
ZCHC52-3R9M	3.9±20%	100K/0.3V	0.14	2.0
ZCHC52-4R7M	4.7±20%	100K/0.3V	0.15	1.8
ZCHC52-5R6M	5.6±20%	100K/0.3V	0.16	1.5
ZCHC52-6R8M	6.8±20%	100K/0.3V	0.17	1.4
ZCHC52-8R2M	8.2±20%	100K/0.3V	0.20	1.3
ZCHC52-100M	10±20%	1K/0.3V	0.23	1.1
ZCHC52-120M	12±20%	1K/0.3V	0.25	1.05
ZCHC52-150M	15±20%	1K/0.3V	0.30	1.00
ZCHC52-180M	18±20%	1K/0.3V	0.35	0.90
ZCHC52-220M	22±20%	1K/0.3V	0.40	0.85
ZCHC52-270M	27±20%	1K/0.3V	0.50	0.75
ZCHC52-330M	33±20%	1K/0.3V	0.55	0.70
ZCHC52-390M	39±20%	1K/0.3V	0.65	0.60
ZCHC52-470M	47±20%	1K/0.3V	0.75	0.55
ZCHC52-560M	56±20%	1K/0.3V	0.95	0.50

ZCHC 52 Series

Part Number	Inductance (uH)	Test Frequency (Hz)	DCR (Ω)max	IDC (A)max
ZCHC52-680M	68±20%	1K/0.3V	1.20	0.45
ZCHC52-820M	82±20%	1K/0.3V	1.40	0.40
ZCHC52-101M	100±20%	1K/0.3V	1.75	0.35
ZCHC52-121M	120±20%	1K/0.3V	2.0	0.25
ZCHC52-151M	150±20%	1K/0.3V	2.6	0.22
ZCHC52-181M	180±20%	1K/0.3V	3.7	0.18
ZCHC52-221M	220±20%	1K/0.3V	4.0	0.19
ZCHC52-271M	270±20%	1K/0.3V	4.2	0.20

ZCHC53 Series

Part Number	Inductance (uH)	Test Frequency (Hz)	DCR (Ω)max	IDC (A)max
ZCHC53-1R0M	1.0±20%	100K/0.3V	0.038	4.5
ZCHC53-2R2M	2.2±20%	100K/0.3V	0.045	3.5
ZCHC53-3R3M	3.3±20%	100K/0.3V	0.055	2.8
ZCHC53-3R9M	3.9±20%	100K/0.3V	0.064	2.6
ZCHC53-4R7M	4.7±20%	100K/0.3V	0.072	2.5
ZCHC53-5R6M	5.6±20%	100K/0.3V	0.084	2.4
ZCHC53-6R8M	6.8±20%	100K/0.3V	0.09	2.2
ZCHC53-8R2M	8.2±20%	100K/0.3V	0.10	2.0
ZCHC53-100M	10±20%	1K/0.3V	0.12	1.8
ZCHC53-120M	12±20%	1K/0.3V	0.13	1.8
ZCHC53-150M	15±20%	1K/0.3V	0.15	1.7
ZCHC53-180M	18±20%	1K/0.3V	0.18	1.6
ZCHC53-220M	22±20%	1K/0.3V	0.22	1.5
ZCHC53-270M	27±20%	1K/0.3V	0.24	1.4
ZCHC53-330M	33±20%	1K/0.3V	0.30	1.1
ZCHC53-390M	39±20%	1K/0.3V	0.40	1.0
ZCHC53-470M	47±20%	1K/0.3V	0.43	0.90
ZCHC53-560M	56±20%	1K/0.3V	0.5	0.85
ZCHC53-680M	68±20%	1K/0.3V	0.6	0.80
ZCHC53-820M	82±20%	1K/0.3V	0.8	0.65
ZCHC53-101M	100±20%	1K/0.3V	0.9	0.60
ZCHC53-121M	120±20%	1K/0.3V	1.0	0.58
ZCHC53-151M	150±20%	1K/0.3V	1.3	0.43
ZCHC53-181M	180±20%	1K/0.3V	1.5	0.41
ZCHC53-221M	220±20%	1K/0.3V	2.0	0.38
ZCHC53-271M	270±20%	1K/0.3V	2.5	0.35
ZCHC53-331M	330±20%	1K/0.3V	3.2	0.28

ZCHC53 Series

Part Number	Inductance (uH)	Test Frequency (Hz)	DCR (Ω)max	IDC (A)max
ZCHC54-1R0M	1.0±20%	100K/0.3V	0.020	5.0
ZCHC54-1R5M	1.5±20%	100K/0.3V	0.025	4.8
ZCHC54-2R2M	2.2±20%	100K/0.3V	0.017	4.5
ZCHC54-2R7M	2.7±20%	100K/0.3V	0.030	3.5
ZCHC54-3R3M	3.3±20%	100K/0.3V	0.034	3.0
ZCHC54-4R7M	4.7±20%	100K/0.3V	0.04	2.8
ZCHC54-6R8M	6.8±20%	100K/0.3V	0.08	2.5
ZCHC54-100M	10±20%	1K/0.3V	0.10	1.44
ZCHC54-120M	12±20%	1K/0.3V	0.12	1.40
ZCHC54-150M	15±20%	1K/0.3V	0.14	1.30
ZCHC54-180M	18±20%	1K/0.3V	0.15	1.23
ZCHC54-220M	22±20%	1K/0.3V	0.18	1.11
ZCHC54-270M	27±20%	1K/0.3V	0.20	0.97
ZCHC54-330M	33±20%	1K/0.3V	0.23	0.88
ZCHC54-390M	39±20%	1K/0.3V	0.32	0.80
ZCHC54-470M	47±20%	1K/0.3V	0.37	0.72
ZCHC54-560M	56±20%	1K/0.3V	0.42	0.68
ZCHC54-680M	68±20%	1K/0.3V	0.46	0.61
ZCHC54-820M	82±20%	1K/0.3V	0.60	0.58
ZCHC54-101M	100±20%	1K/0.3V	0.70	0.52
ZCHC54-121M	120±20%	1K/0.3V	0.93	0.48
ZCHC54-151M	150±20%	1K/0.3V	1.10	0.40
ZCHC54-181M	180±20%	1K/0.3V	1.38	0.38
ZCHC54-221M	220±20%	1K/0.3V	1.57	0.35

ZCHC73 Series

Part Number	Inductance (uH)	Test Frequency (Hz)	DCR (Ω)max	IDC (A)max
ZCHC73-1R0M	1.0±20%	100K/0.3V	0.018	7.0
ZCHC73-1R5M	1.5±20%	100K/0.3V	0.020	6.0
ZCHC73-2R2M	2.2±20%	100K/0.3V	0.023	5.0
ZCHC73-3R3M	3.3±20%	100K/0.3V	0.025	4.0
ZCHC73-4R7M	4.7±20%	100K/0.3V	0.039	3.5
ZCHC73-6R8M	6.8±20%	100K/0.3V	0.04	2.8
ZCHC73-100M	10±20%	1K/0.3V	0.08	1.44
ZCHC73-120M	12±20%	1K/0.3V	0.09	1.39
ZCHC73-150M	15±20%	1K/0.3V	0.10	1.24
ZCHC73-180M	18±20%	1K/0.3V	0.11	1.12
ZCHC73-220M	22±20%	1K/0.3V	0.13	1.07
ZCHC73-270M	27±20%	1K/0.3V	0.15	0.94
ZCHC73-330M	33±20%	1K/0.3V	0.17	0.85
ZCHC73-390M	39±20%	1K/0.3V	0.22	0.74

ZCHC73 Series

Part Number	Inductance (uH)	Test Frequency (Hz)	DCR (Ω)max	IDC (A)max
ZCHC73-470M	47±20%	1K/0.3V	0.25	0.68
ZCHC73-560M	56±20%	1K/0.3V	0.28	0.64
ZCHC73-680M	68±20%	1K/0.3V	0.33	0.59
ZCHC73-820M	82±20%	1K/0.3V	0.41	0.54
ZCHC73-101M	100±20%	1K/0.3V	0.48	0.51
ZCHC73-121M	120±20%	1K/0.3V	0.54	0.49

ZCHC75 Series

Part Number	Inductance (uH)	Test Frequency (Hz)	DCR (Ω)max	IDC (A)max
ZCHC75-1R0M	1.0±20%	100K/0.3V	0.013	7.5
ZCHC75-1R5M	1.5±20%	100K/0.3V	0.023	5.3
ZCHC75-2R2M	2.2±20%	100K/0.3V	0.028	4.5
ZCHC75-3R3M	3.3±20%	100K/0.3V	0.045	4.0
ZCHC75-4R7M	4.7±20%	100K/0.3V	0.058	3.2
ZCHC75-6R8M	6.8±20%	100K/0.3V	0.07	2.8
ZCHC75-100M	10±20%	1K/0.3V	0.07	2.3
ZCHC75-120M	12±20%	1K/0.3V	0.08	2.0
ZCHC75-150M	15±20%	1K/0.3V	0.09	1.8
ZCHC75-180M	18±20%	1K/0.3V	0.10	1.6
ZCHC75-220M	22±20%	1K/0.3V	0.11	1.5
ZCHC75-270M	27±20%	1K/0.3V	0.12	1.3
ZCHC75-330M	33±20%	1K/0.3V	0.13	1.2
ZCHC75-390M	39±20%	1K/0.3V	0.16	1.1
ZCHC75-470M	47±20%	1K/0.3V	0.18	1.0
ZCHC75-560M	56±20%	1K/0.3V	0.24	0.94
ZCHC75-680M	68±20%	1K/0.3V	0.28	0.85
ZCHC75-820M	82±20%	1K/0.3V	0.37	0.78
ZCHC75-101M	100±20%	1K/0.3V	0.43	0.72
ZCHC75-121M	120±20%	1K/0.3V	0.47	0.66
ZCHC75-151M	150±20%	1K/0.3V	0.64	0.58
ZCHC75-181M	180±20%	1K/0.3V	0.71	0.51
ZCHC75-221M	220±20%	1K/0.3V	0.96	0.49
ZCHC75-271M	270±20%	1K/0.3V	1.11	0.42
ZCHC75-331M	330±20%	1K/0.3V	1.26	0.40
ZCHC75-391M	390±20%	1K/0.3V	1.77	0.36
ZCHC75-471M	470±20%	1K/0.3V	1.96	0.34

ZCHC104 Series

Part Number	Inductance (uH)	Test Frequency (Hz)	DCR (Ω)max	IDC (A)max
ZCHC104-1R0M	1.0±20%	100K/0.3V	0.012	8.70
ZCHC104-1R5M	1.5±20%	100K/0.3V	0.020	5.40
ZCHC104-2R2M	2.2±20%	100K/0.3V	0.028	2.85
ZCHC104-3R3M	3.3±20%	100K/0.3V	0.038	2.75
ZCHC104-4R7M	4.7±20%	100K/0.3V	0.040	2.70
ZCHC104-6R8M	6.8±20%	100K/0.3V	0.042	2.65
ZCHC104-100M	10±20%	1K/0.3V	0.048	2.60
ZCHC104-120M	12±20%	1K/0.3V	0.05	2.38
ZCHC104-150M	15±20%	1K/0.3V	0.07	1.87
ZCHC104-180M	18±20%	1K/0.3V	0.08	1.73
ZCHC104-220M	22±20%	1K/0.3V	0.09	1.60
ZCHC104-270M	27±20%	1K/0.3V	0.10	1.44
ZCHC104-330M	33±20%	1K/0.3V	0.12	1.26
ZCHC104-390M	39±20%	1K/0.3V	0.15	1.20
ZCHC104-470M	47±20%	1K/0.3V	0.17	1.10
ZCHC104-560M	56±20%	1K/0.3V	0.20	1.01
ZCHC104-680M	68±20%	1K/0.3V	0.22	0.91
ZCHC104-820M	82±20%	1K/0.3V	0.25	0.85
ZCHC104-101M	100±20%	1K/0.3V	0.34	0.74
ZCHC104-121M	120±20%	1K/0.3V	0.40	0.69
ZCHC104-151M	150±20%	1K/0.3V	0.54	0.61
ZCHC104-181M	180±20%	1K/0.3V	0.62	0.56
ZCHC104-221M	220±20%	1K/0.3V	0.72	0.53
ZCHC104-271M	270±20%	1K/0.3V	0.95	0.45
ZCHC104-331M	330±20%	1K/0.3V	1.10	0.42
ZCHC104-391M	390±20%	1K/0.3V	1.24	0.38
ZCHC104-471M	470±20%	1K/0.3V	1.53	0.35
ZCHC104-561M	560±20%	1K/0.3V	1.90	0.32

ZCHC 105 Series

Part Number	Inductance (uH)	Test Frequency (Hz)	DCR (Ω)max	IDC (A)max
ZCHC105-1R0M	1.0±20%	100K/0.3V	0.009	8.63
ZCHC105-2R2M	2.2±20%	100K/0.3V	0.016	7.20
ZCHC105-3R3M	3.3±20%	100K/0.3V	0.018	6.50
ZCHC105-4R7M	4.7±20%	100K/0.3V	0.02	5.50
ZCHC105-6R8M	6.8±20%	100K/0.3V	0.04	4.50
ZCHC105-100M	10±20%	1K/0.3V	0.06	2.60
ZCHC105-150M	15±20%	1K/0.3V	0.07	1.72
ZCHC105-180M	18±20%	1K/0.3V	0.08	1.58
ZCHC105-220M	22±20%	1K/0.3V	0.09	1.42

ZCHC 105 Series

Part Number	Inductance (uH)	Test Frequency (Hz)	DCR (Ω)max	IDC (A)max
ZCHC 105-270M	27±20%	1K/0.3V	0.10	1.32
ZCHC 105-330M	33±20%	1K/0.3V	0.11	1.16
ZCHC 105-390M	39±20%	1K/0.3V	0.12	1.10
ZCHC 105-470M	47±20%	1K/0.3V	0.14	1.00
ZCHC 105-560M	56±20%	1K/0.3V	0.19	0.93
ZCHC 105-680M	68±20%	1K/0.3V	0.21	0.85
ZCHC 105-820M	82±20%	1K/0.3V	0.28	0.79
ZCHC 105-101M	100±20%	1K/0.3V	0.34	0.72
ZCHC 105-121M	120±20%	1K/0.3V	0.37	0.63
ZCHC 105-151M	150±20%	1K/0.3V	0.51	0.55
ZCHC 105-181M	180±20%	1K/0.3V	0.57	0.50
ZCHC 105-221M	220±20%	1K/0.3V	0.78	0.47
ZCHC 105-271M	270±20%	1K/0.3V	0.87	0.41
ZCHC 105-331M	330±20%	1K/0.3V	1.20	0.37
ZCHC 105-471M	470±20%	1K/0.3V	1.50	0.33
ZCHC 105-561M	560±20%	1K/0.3V	1.90	0.30
ZCHC 105-681M	680±20%	1K/0.3V	2.25	0.28
ZCHC 105-821M	820±20%	1K/0.3V	2.55	0.24

- * The maximum rated current is a DC current which causes initial inductance to decrease by 25% or temperature to rise by 40°C, whichever is smaller (at ambient reference temperature: 20 °C).
- * Operating Temperature: -25°C to +85°C.