

CT series

Sealed toggle switches



DISTINCTIVE FEATURES

- Completely sealed switching chamber
- Three types of terminals
- UL approved



ENVIRONMENTAL SPECIFICATIONS

- Front sealing to IP67
- Operating temperature : -40 °C to + 85 °C (-40 °F to +185 °F)



ELECTRICAL SPECIFICATIONS

- Max. current/voltage rating with resistive load and electrical life at full load: see table below
- Initial contact resistance : 50 mΩ max.
- Insulation resistance : 1,000 MΩ min. at 500 VDC
- Dielectric strength : 2,500 Vrms 50 Hz min. between terminals
3,000 Vrms 50 Hz min. between terminals and frame

ELECTRICAL RATING AND LIFE		
FUNCTIONS	DIRECT CURRENT	UL
ON-OFF and ON-ON	10,000 cycles 15 A 28 VDC resistive 5 A 28 VDC lamp load	10 A 125/250 VAC according to UL 61058-1 and CAN/ CSA-C22.2 NO. 61058-1:17
OTHER FUNCTIONS	10,000 cycles 15 A 28 VDC resistive 3 A 28 VDC lamp load	



GENERAL SPECIFICATIONS

- Mechanical life : 40,000 cycles
- Torque : 2 Nm (1.47 Ft.lb) max. applied to nut
- Panel thickness : see "Mounting Accessories" on the following pages

The company reserves the right to change specifications without notice.



CT series

Sealed toggle switches



MATERIALS

- Case : phenolic resin UL94-V0
- Bushing and cover : zamac
- Actuator : bright nickel or Polyamid
- Contacts : silver alloy

AGENCY APPROVAL



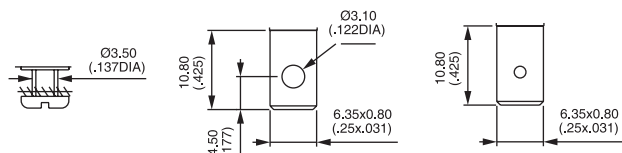
File E83438

Availability : consult factory for details of approved models.

Marking : to order switches marked UL, complete appropriate box of ordering format.



TERMINALS



Screw*

Solder lug/quick connect

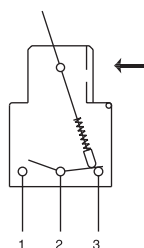
Normalized quick-connect

*Screw terminals are not mounted, but supplied separately.



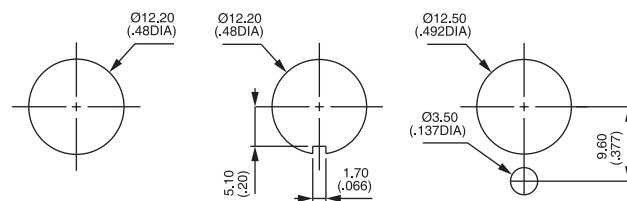
ELECTRICAL FUNCTIONS

→ KEYWAY



PANEL CUT-OUT

See "mounting accessories" on the following pages.



CT series

Sealed toggle switches



BUILD YOUR PART NUMBER

CT

SERIES

NUMBER OF POLES

ELECTRICAL FUNCTIONS

TERMINALS*

3

Single pole

4

Double pole

1-0

ON

-

OFF

2-0

ON

-

m.OFF

3-0

OFF

-

MOM

4-1

ON

³ON⁴

ON ▲

4-2

ON

³ON⁴

MOM ▲

4-3

MOM

³ON⁴

MOM ▲

5-0

ON

-

MOM

6-0

ON

-

ON

7-0

MOM

OFF

MOM

8-0

ON

OFF

MOM

9-0

ON

OFF

ON

0

Screw**

2

Solder lug/
quick-connect

3

Normalized
quick-connect

▲ Function 4 : double pole only

OPTIONS									
LEVER STYLES	LEVER FINISH	LEVER LOCKING	AGENCY APPROVAL	ACCESSORIES					
1	N	0	0	0	2 hex nuts, 1 locking ring and 1 lockwasher				
9	2		2	2	2 hex nuts and 1 sealing washer				
	4								
	5								



ABOUT THIS SERIES

On the following pages, you will find successively basic part numbers of switches and options in the same order as in above chart.



Notice : please note that not all combinations of above numbers are available. Refer to the following pages for further information.



Switch guards are available to prevent inadvertent lever operation. On request.



Mounting accessories : see above and on the following page

*Packaging unit : 25 pieces for screw terminals (0) ; 15 pieces for solder lug (2) or normalized quick connect terminals (3)

**Screw terminals are not mounted but supplied separately.

CT series

Sealed toggle switches

SCREW TERMINALS SINGLE POLE



	Angle of throw (A)	III A2-A3	II	I A1-A2
CT31-00	22°	ON	-	OFF
CT32-00	22°	ON	-	m.OFF
CT33-00	22°	OFF	-	MOM
CT35-00	22°	ON	-	MOM
CT36-00	22°	ON	-	ON
CT37-00	30°	MOM	OFF	MOM
CT38-00	30°	ON	OFF	MOM
CT39-00	30°	ON	OFF	ON

SCREW TERMINALS DOUBLE POLE



	Angle of throw (A)	III A2-A3 B5-B6	II *A3-B5 **A1-B5	I A1-A2 B5-B4
CT41-00	22°	ON	-	OFF
CT44-10	30°	ON	ON*	ON
CT44-20	30°	ON	ON*	MOM
CT44-30	30°	MOM	ON*	MOM
CT45-00	22°	ON	-	MOM
CT46-00	22°	ON	-	ON
CT47-00	30°	MOM	OFF	MOM
CT48-00	30°	ON	OFF	MOM
CT49-00	30°	ON	OFF	ON

SOLDER LUG/QUICK-CONNECT TERMINALS SINGLE POLE



	Angle of throw (A)	III A2-A3	II	I A1-A2
CT31-02	22°	ON	-	OFF
CT32-02	22°	ON	-	m.OFF
CT33-02	22°	OFF	-	MOM
CT35-02	22°	ON	-	MOM
CT36-02	22°	ON	-	ON
CT37-02	30°	MOM	OFF	MOM
CT38-02	30°	ON	OFF	MOM
CT39-02	30°	ON	OFF	ON

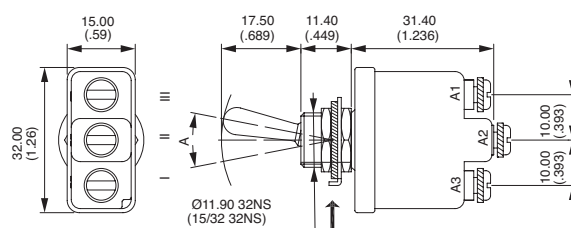
SOLDER LUG/QUICK-CONNECT TERMINALS DOUBLE POLE



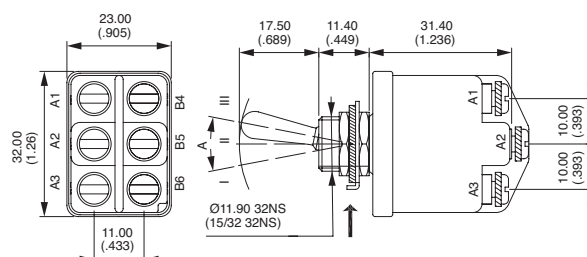
	Angle of throw (A)	III A2-A3 B5-B6	II *A3-B5 **A1-B5	I A1-A2 B5-B4
CT41-02	22°	ON	-	OFF
CT44-12	30°	ON	ON*	ON
CT44-22	30°	ON	ON*	MOM
CT44-32	30°	MOM	ON*	MOM
CT45-02	22°	ON	-	MOM
CT46-02	22°	ON	-	ON
CT47-02	30°	MOM	OFF	MOM
CT48-02	30°	ON	OFF	MOM
CT49-02	30°	ON	OFF	ON

→ KEYWAY

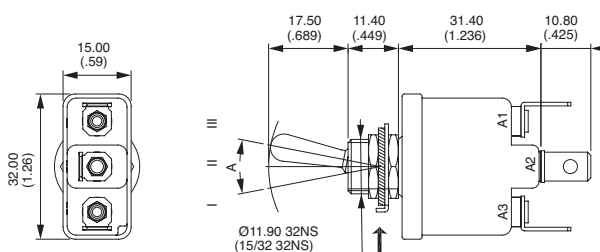
Shown with standard lever



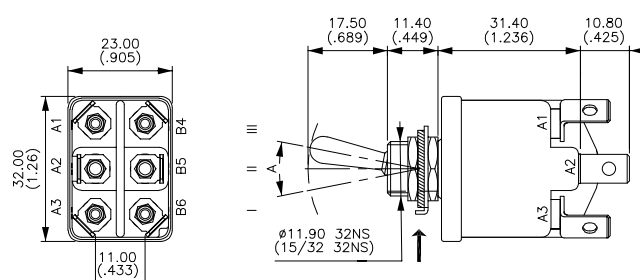
→ KEYWAY



→ KEYWAY



→ KEYWAY



*and** : A2-B4 and A2-B6 = jumper to be wired by the user.

CT series

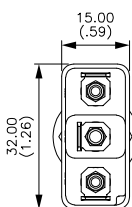
Sealed toggle switches

NORMALIZED QUICK-CONNECT TERMINALS SINGLE POLE

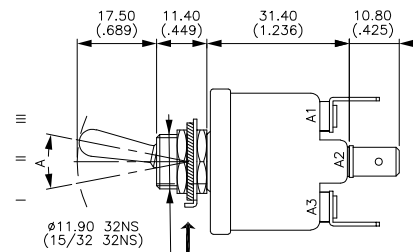


	Angle of throw (A)	III A2-A3	II	I A1-A2
CT31-03	22°	ON	-	OFF
CT32-03	22°	ON	-	m.OFF
CT33-03	22°	OFF	-	MOM
CT35-03	22°	ON	-	MOM
CT36-03	22°	ON	-	ON
CT37-03	30°	MOM	OFF	MOM
CT38-03	30°	ON	OFF	MOM
CT39-03	30°	ON	OFF	ON

→ KEYWAY



Shown with standard lever

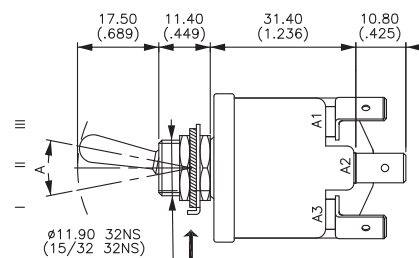
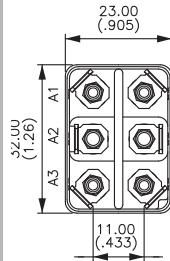


NORMALIZED QUICK-CONNECT TERMINALS DOUBLE POLE



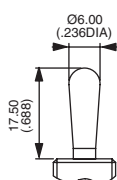
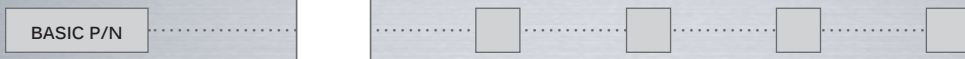
	Angle of throw (A)	III A2-A3 B5-B6	II *A3-B5 **A1-B5	I A1-A2 B5-B4
CT41-03	22°	ON	-	OFF
CT44-13	30°	ON	ON*	ON
CT44-23	30°	ON	ON*	MOM
CT44-33	30°	MOM	ON*	MOM
CT45-03	22°	ON	-	MOM
CT46-03	22°	ON	-	ON
CT47-03	30°	MOM	OFF	MOM
CT48-03	30°	ON	OFF	MOM
CT49-03	30°	ON	OFF	ON

→ KEYWAY

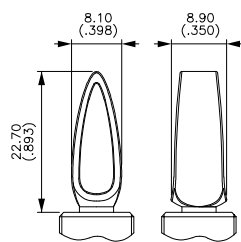


*and** : A2-B4 and A2-B6 = jumper to be wired by the user.

LEVER STYLES



1
Standard



9
Plastic paddle

LEVER FINISH



- N Bright nickel (for lever 1 only)
- 2 Black (for lever 9 only)
- 4 Grey (for lever 9 only)
- 5 Yellow (for lever 9 only)

CT series

Sealed toggle switches

LOCKING LEVER STYLES



0 No locking

AGENCY APPROVAL



0 None
2 UL

APEM has the ability to develop custom configurations. Please contact us with your requirements.

MOUNTING ACCESSORIES



- 0 For NON-SEALED mounting (panel cut-out fig. 1, 2 or 3)
2 hex nuts 14 mm (.551) across flats, 1 locking ring U121 or U12, 1 lockwasher U13
Panel thickness : 5 mm (.196) max.
- 2 For SEALED mounting (panel cut-out fig. 2)
2 hex nuts 14 mm (.551) across flats and 1 sealing washer U60
Panel thickness : 4 mm (.157) max.

Special hardware : black cap nut U129. Order separately. See "Hardware" section of website.

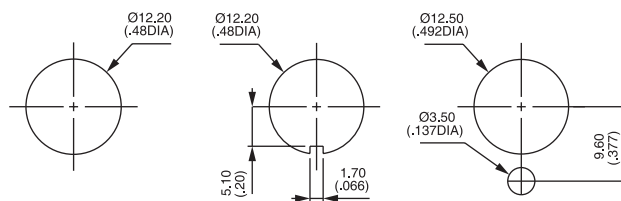


Figure 1

Figure 2

Figure 3